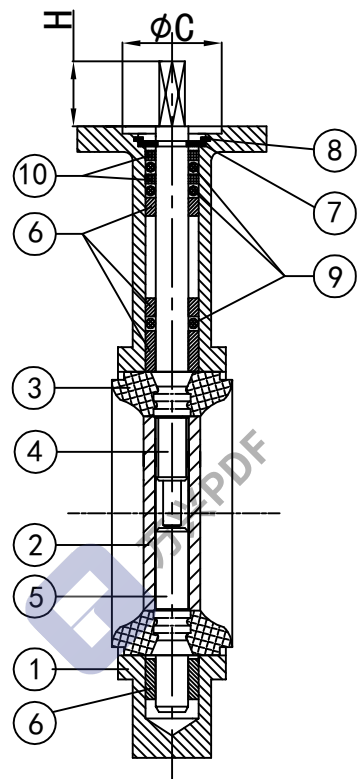
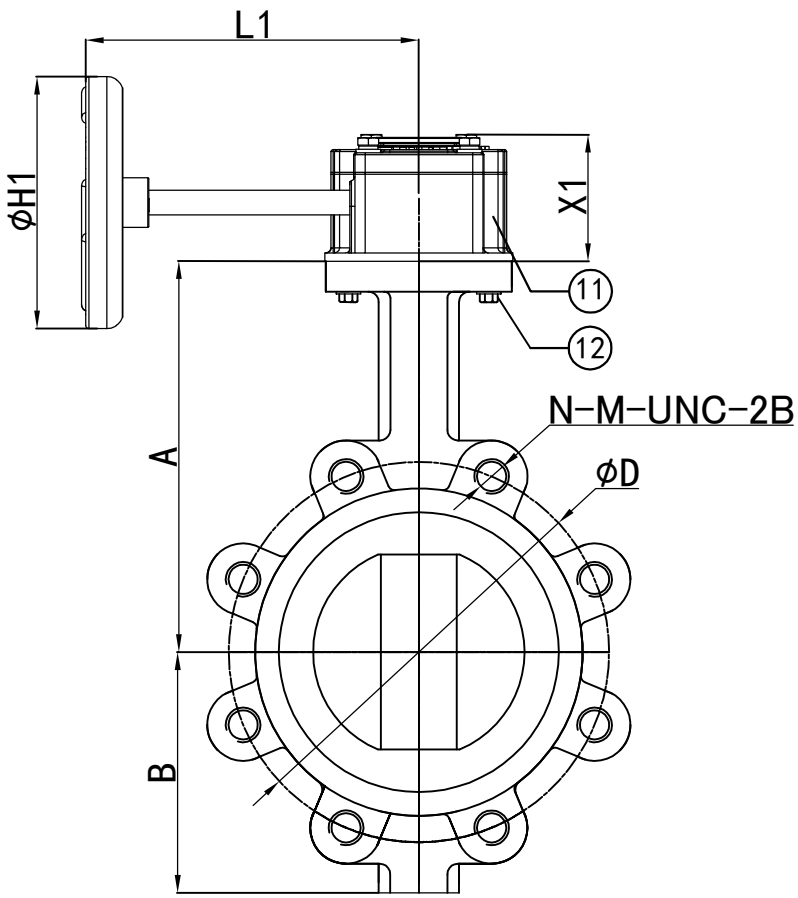
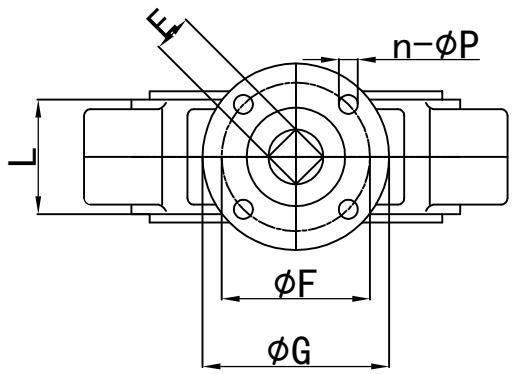


Pressure		
Specifications		
Shell test pressure	Hydraulic Pressure	15.18bar
Closed test pressure		
Operating temperature range	EPDM Seat	-10°C-110°C
Medium	Water, oil, gas	



1. Valve design and Manufacture to API 609-2016;
2. Valve inspection and Testing to API 598-2016;
3. Flanges according to ASME B16.1-2015;
4. Actuator attachments to EN ISO 5211-2017;
5. Face-to-face dimension to BS EN 558: 2017.



SIZE	CLASS125				N-M-UNC-2B									
	A	B	C	D	E	F	G	L	n-φp	H	H1	L1	X1	
DN200	250	171	71	299	8-3/4-10UNC-2B	17	102	125	59.5	4-12	25	200	194	72
DN250	282	205	71	362	12-7/8-9UNC-2B	22	102	125	65	4-12	30	200	194	72
DN300	326	248	71	432	12-7/8-9UNC-2B	22	102	125	75.9	4-12	30	200	194	72

NO.	PARTS	Number	MATERIAL	REMARKS
12	Bolt	4	SS304	
11	Gear box	1	AL102	
10	Ring	2	PA6	
9	"O"ring	3	NBR	
8	Circlip	1	65Mn	
7	Cotter Pin	1	65Mn	
6	Bushing	4	PTFE	
5	Lower Shaft	1	SS420	
4	Upper Shaft	1	SS420	
3	SEAT	1	EPDM	
2	DISC	1	CF8M	
1	BODY	1	GGG40	

					FLOFAB (2"-6") D71X125A-W-0			
					Lug type butterfly valve			
					Pressure 压力	Material 材质	Weight 重量	Proportion 比例
					CLASS125	xx	xx	xx
Mark 标记	Total 处数	File No. 更改文件号	Signature 签字	DATE 日期				
Des. 设计		Std. 标准化						
Chk. 制图		Examine 审核						
Ver. 校对		App. 批准						
Teoh. 工艺		DATE 日期						