



Stainless Steel Flexibles

Series ST-SM

**Operation, Maintenance
& Installation Manual**



www.flofab.com

001-iom-2017-stsm

Go to www.flofab.com in Our Products Section to see the Master Spec - <http://www.arcomnet.com/masterspec/>



SELECT FLO-FAB STAINLESS STEEL FLEXIBLE

***CUSHION VIBRATION**

***MINIMIZE STRESS**

***REDUCE NOISE**

***DIA. 1 / 2 TO 14 IN.**

STYLES AND SIZES

1. **TYPE ST** - Standard sizes from 1/2 in. (15mm) to 3 in. (80 mm) ID Stainless Steel Braided Corrugated Hose with Sch 40 Carbon Steel Male Nipples welded each end.
2. **TYPE SS** - Standard sizes from 2 in. (50 mm) to 14 in. (350 mm) ID «SHORT» Stainless Steel Braided Corrugated Hose with standard 150# ASA Carbon Steel plate flanges welded each end.
3. **TYPE SM** - Standard sizes from 2 in. (50 mm) to 14 in. (350 mm) ID «MEDIUM» Stainless Steel Braided Corrugated Hose with standard 150# ASA Carbon Steel plate flanges welded each end.
4. **TYPE SL** - Standard sizes from 2 in. (50 mm) to 14 in. (350 mm) ID «LONG» Stainless Steel Braided Corrugated Hose with standard 150# ASA Carbon Steel plate flanges welded each end.

DESIGN AND FEATURES - Flexible Pump/ Compressor Connectors are made of Corrugated Stainless Steel Hose and covered with corresponding Braid to give you a high temperature Leak Proof Hose. With the appropriate fittings attached you have a Connector which will allow Temperature up to 850 F (457 C) and Pressure up to 850 PSIG (5860) KPa at 70 F (21 C).

ALLOWABLE MOTIONS - Flexible Pump Connectors will absorb Vibration, relieve stress from mating equipment and allow the correction of some misalignment.

NOTE:

- 1) Larger sizes and lengths available on request.
- 2) Maximum test procedure at 70 F (21 C) equals 1 1/2 times the maximum steady operating pressure at 70 F (21 C).
- 3) Consult us where greater pressure or offsets occur.
- 4) Install all Pump Connectors in a straight line without offset. Piping should be anchored or



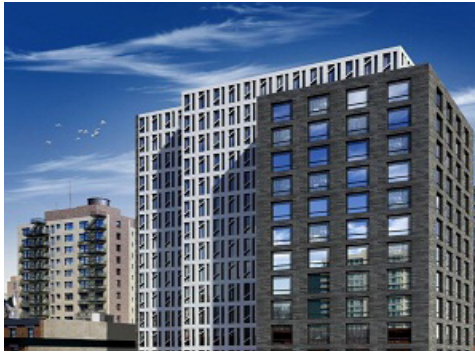
TEMPERATURE

As the working temperature increases, the pressure ratings of corrugated hose decreases. The following charts can be used as a reference.

TEMPERATURE		MATERIAL		
°C	°F	STAINLESS STEEL	MONEL	BRONZE
21	70	1.00	1.00	1.00
65	150	.97	.93	.92
93	200	.94	.90	.89
121	250	.92	.87	.86
148	300	.88	.83	.83
176	350	.85	.82	.81
204	400	.83	.79	.78
232	450	.81	.77	.75
260	500	.78	.73	
315	600	.74	.72	
371	700	.70	.71	
426	800	.66	.70	
482	900	.62		
537	1000	.60		
593	1100	.58		
648	1200	.55		
704	1300	.50		
760	1400	.44		
815	1500	.40		

MAXIMUM SERVICE TEMPERATURE					
ALLOY	MAXIMUM		ALLOY	MAXIMUM	
	°C	°F		°C	°F
AISI Stainless Steel Type:			AISI Stainless Steel Type:		
321	815	1500	Brazing (RCuZn-C or BCuP-2)	232	450
316 ELC	815	1500	Bronze Hose	454	850
304	454	850	Steel Hose		
302	454	850	Silver Brazing	315	600
Mild Steel	454	850	(AWS-B-Ag-2)		
Malleable Iron	426	800	Asbestos Packing Grade	204	400
Monel	426	800	Commercial Asbestos	232	450
Bronze	232	450	Underwriters Asbestos	287	550
Brass	232	450	A Asbestos	315	600
Copper	204	400	AA Asbestos	398	750
Aluminium 52S-0 (5052-0)	315	600	AAA Asbestos	482	900
Galvanizing	232	450	AAAA Asbestos	93	200
Soft Solder (Pb: 60. Sn: 40)	121	250	Cotton Cord Packing		
(Pb: 95. Sn: 5)	176	350			

We are proud supplier for the following completed and on going projects :



444 10th Avenue North
New York, NY 10001.
USA



Edgemere
1502 Lakeshore Road E.,
Oakville, Ontario, Canada



51 Astor
25 Cooper St, New York,
NY 10034, United States



Tricentris, Lachute
Félix-Touchette Road,
Lachute, Quebec, Canada

Sales and Service:

Quebec, Canada
Tel. : (450) 621-2995
Fax : (450) 621-4995

Lake Worth
Florida, USA
33467-5749

Toronto, Canada
Tel. : +1 (647) 544-2995

www.flofab.com

SERVICE 24/7 : parts@flofab.com

