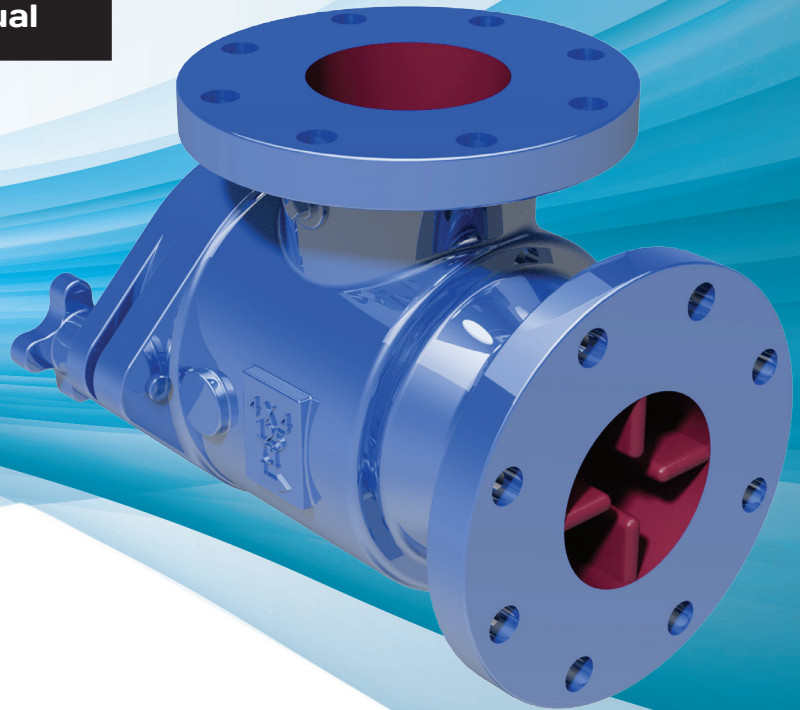




# Suction Diffusers

## Series ASDFF

Operation, Maintenance  
& Installation Manual





# SUCTION DIFFUSER

## FEATURES:

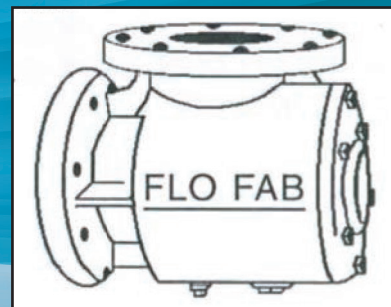
- Reduces both space and installation costs by replacing an extended entry pipe, a long radius elbow and a strainer.
- Disposable fine mesh start-up strainer provided on all models guarantees a clean system.
- Steel stabilizing vanes ensure smooth flow into the pump.
- Drain/Purge plugs furnished to routinely remove foreign particles and protect pump and other system components.
- Pressure tap allows monitoring of strainer condition.
- Slowdown tapping supplied complete with magnetic plug to protect pump seals from damage by foreign particles.

## INSTALLATION:

1. Mount standard 1.0. support leg and foot to pad cast-on body of Suction Diffuser.
2. After piping and initial circulation are complete, remove fine mesh start-up strainer.
3. If optional pressure tap is provided, a gauge can then be connected to both the pump suction and the suction diffuser's schrader valve. An increase in pressure drop will indicate when the strainer may require cleaning.

## MAINTENANCE:

It is recommended that the stabilizing vanes be periodically inspected and the permanent strainer be periodically cleaned. This will ensure smooth flow into the pump and avoid damage to the pump components.



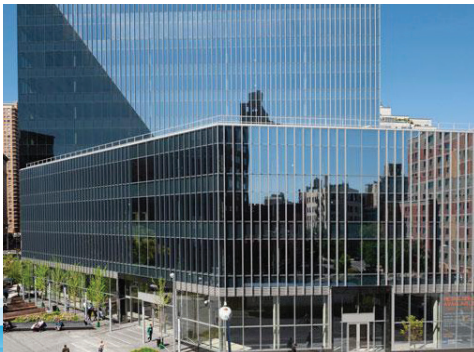
We are proud supplier for the following completed and on going projects :



**444 10th Avenue North**  
New York, NY 10001.  
USA



**Edgemere**  
1502 Lakeshore Road E.,  
Oakville, Ontario, Canada



**51 Astor**  
25 Cooper St, New York,  
NY 10034, United States



**Tricentris, Lachute**  
Félix-Touchette Road,  
Lachute, Quebec, Canada

## Sales and Service:

Quebec, Canada  
Tel. : (450) 621-2995  
Fax : (450) 621-4995

Lake Worth  
Florida, USA  
33467-5749

Toronto, Canada  
Tel. : +1 (647) 544-2995

[www.flofab.com](http://www.flofab.com)

SERVICE 24/7 : [parts@flofab.com](mailto:parts@flofab.com)

