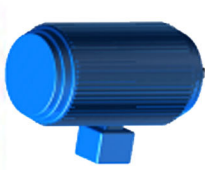




	<p>SERIES</p>	<p>XRI</p>
<p>TYPE</p>	<p>Universal 10-Position Vertical / Horizontal Centrifugal pump with removable impeller</p>	
<p>CAPACITIES</p>	<p>up to 15,850 USGPM (3600 m³ / hr)</p>	
<p>HEAD</p>	<p>up to 655ft (200 m)</p>	
<p>PRESSURE</p>	<p>up to 250PSI (1724kpa)</p>	
<p>HORSEPOWER</p>	<p>up to 500HP (372KW)</p>	
<p>DRIVES</p>	<p>TC Electric Motors</p>	
<p>APPLICATIONS</p>	<p>Water and Clear Liquids</p>	
<p>TEMPERATURE</p>	<p>up to 300°F (149°C)</p>	
<p>MATERIALS OF CONSTRUCTION</p>	<p>Cast Iron, Bronze Fitted as Standard, Other Materials Also Available</p>	

Vertical Position



Motor

Construction of Series XRI



Grout
Not required



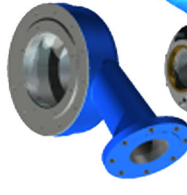
Motor Bracket



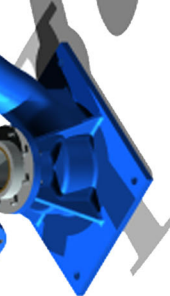
Alignment
Not required



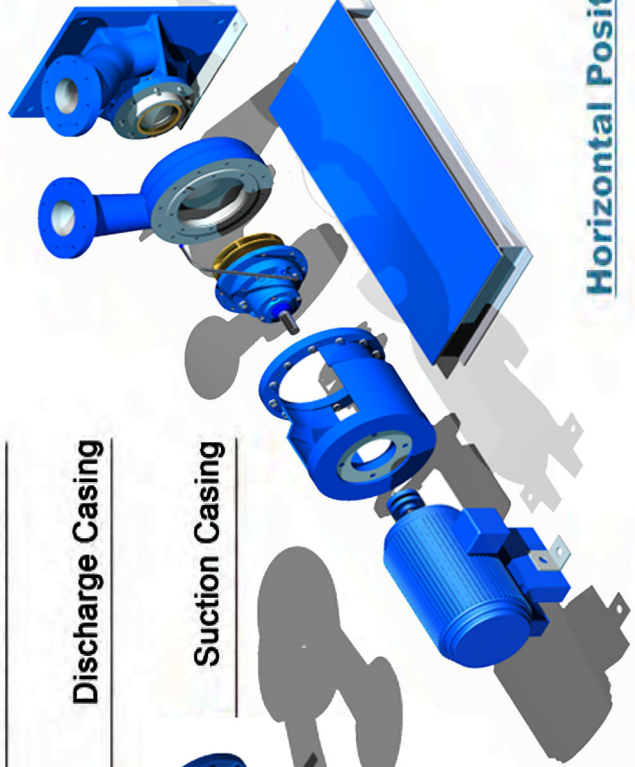
Impeller Assembly



Discharge Casing



Suction Casing



Horizontal Position