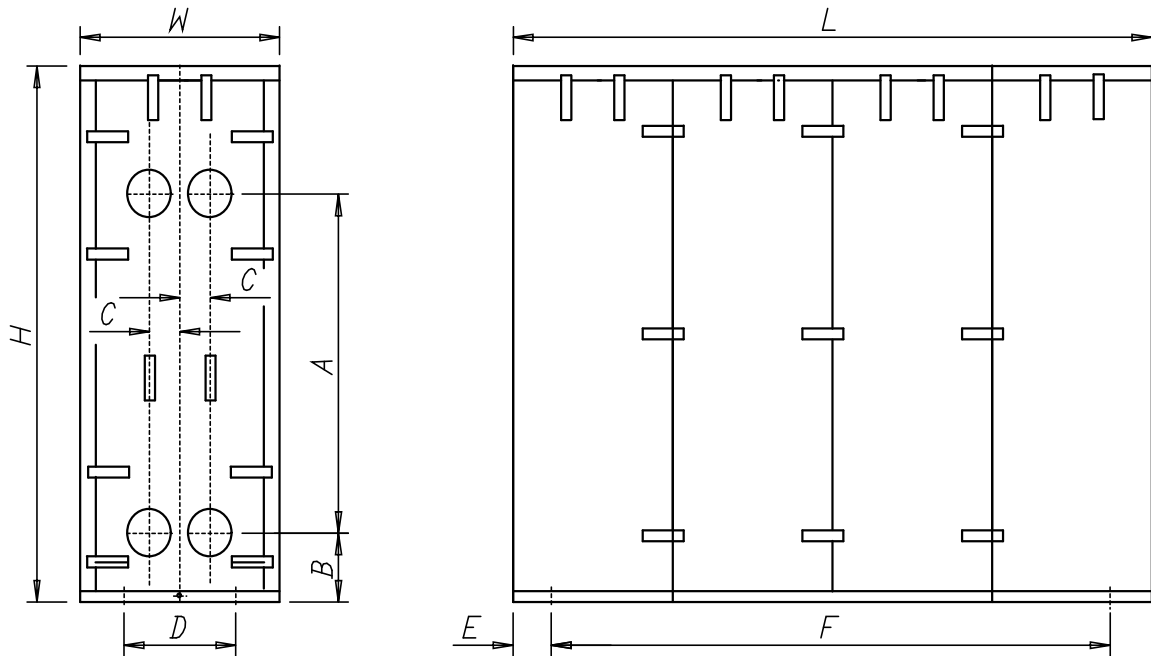




SUBMITTAL

TYPE:FFW-SERIES INSULATION
 PACKAGE FOR PLATE HEAT EXCHANGERS
Models: FFW65
Submittal Sheet No. A-60A **Date:** 2/2014

Job Name _____	Submitted By _____	Date _____
Location _____	Approved By _____	Date _____
_____	Order No. _____	Date _____
Engineer _____	Notes _____	
Contractor _____	_____	
Sales Rep. _____	_____	



Dimensional Data (inches)

A:	66.7	Frame Size	24	36	48	60	72	84	96	108
B:	12.0	F:	32.0	44.0	56.0	68.0	80.0	92.0	104.0	116.0
C:	5.9	L:	45.0	57.0	67.0	81.0	93.0	105.0	117.0	129.0
D:	20.3	E:	4.0	H:	96.0	W:	30.0	Mounting Holes	D/F: 3 @ 0.75	

Specification

Provide a plate heat exchanger insulation package with a minimum R-13 that consists of self supporting removeable panels held together with clasps mounted in a drip tray.

Construction

Insulation Board: 2" Polyisocyanurate foam core with reinforced polymer reflective foil outer face with reinforced coated inner face.
 Drip Tray: Galvanized steel walls and heat exchanger mounting blocks. A 1/2" NPT drain is provided.

Specification

Provide a plate heat exchanger insulation package with a minimum R-13 that consists of self supporting removeable panels held together with clasps mounted in a drip tray.

Installation

Install drip tray over anchor bolts on a flat level surface. Mount heat exchanger over anchor bolts; resting on mounting blocks provided in drip tray. Install insulation panels. Clasps to be high strength with over center catch and strile zinc coated steel.