



Double Suction Split Case

**Series
4800 & 4900**
(New Generation)



www.flofab.com

001-cat-2016-dssc

Go to www.flofab.com in Our Products Section to see the Master Spec - <http://www.arcomnet.com/masterspec/>





TABLE OF CONTENTS

EXPLODED VIEW.....	2
PRODUCT FEATURES.....	3
PRODUCT INFORMATION.....	4
PRODUCT CHARACTERISTICS.....	5
PERFORMANCE CURVES.....	6

HISTORY

Flo Fab was established in 1981 by Denis Gauvreau who created and developed the products line and constantly being perfected by Marc Gauvreau, as well as by a team of professional engineers and designers. It's a combination of existing designs from several renowned products and the innovative ideas of a new generation professionals.

Through the years, Flo Fab has acquired several companies and service entities including : AQUA-PROFAB (ASME Tanks manufacturer), MÉNARD, LÉONARD ÉLECTRIQUE, PMA. , Furthermore Flo Fab purchased equipment, fabrication designs and patterns from IDEALCO, a manufacturer of shell and tube type heat exchangers.

The after sales services, sales, engineering, R&D, production, quality control, accounting and administration departments of all the above companies share the same location.

In December 2014, Marc Gauvreau, son of the founder, acquired all shares of The company. Flo Fab and is constantly investing in new state of the art innovations new product like the XRI series and Prefab Skid for Hydronic Heating & cooling system, pumping systems. This has allowed Flo Fab to retain competent and experienced staff of professionals with varied and specialized abilities that constantly work on improving our existing products and add new engineered solutions that exceeding customer's expectations . Flo Fab has grown quite rapidly and now proudly offers of a wide range of products available directly from one manufacturer. This includes pumps & pump packages, tanks, heat exchangers & hydronic accessories. This allows each project stakeholders to enjoy economical savings, peace of mind, best value for their investment and optimized total cost of ownership.



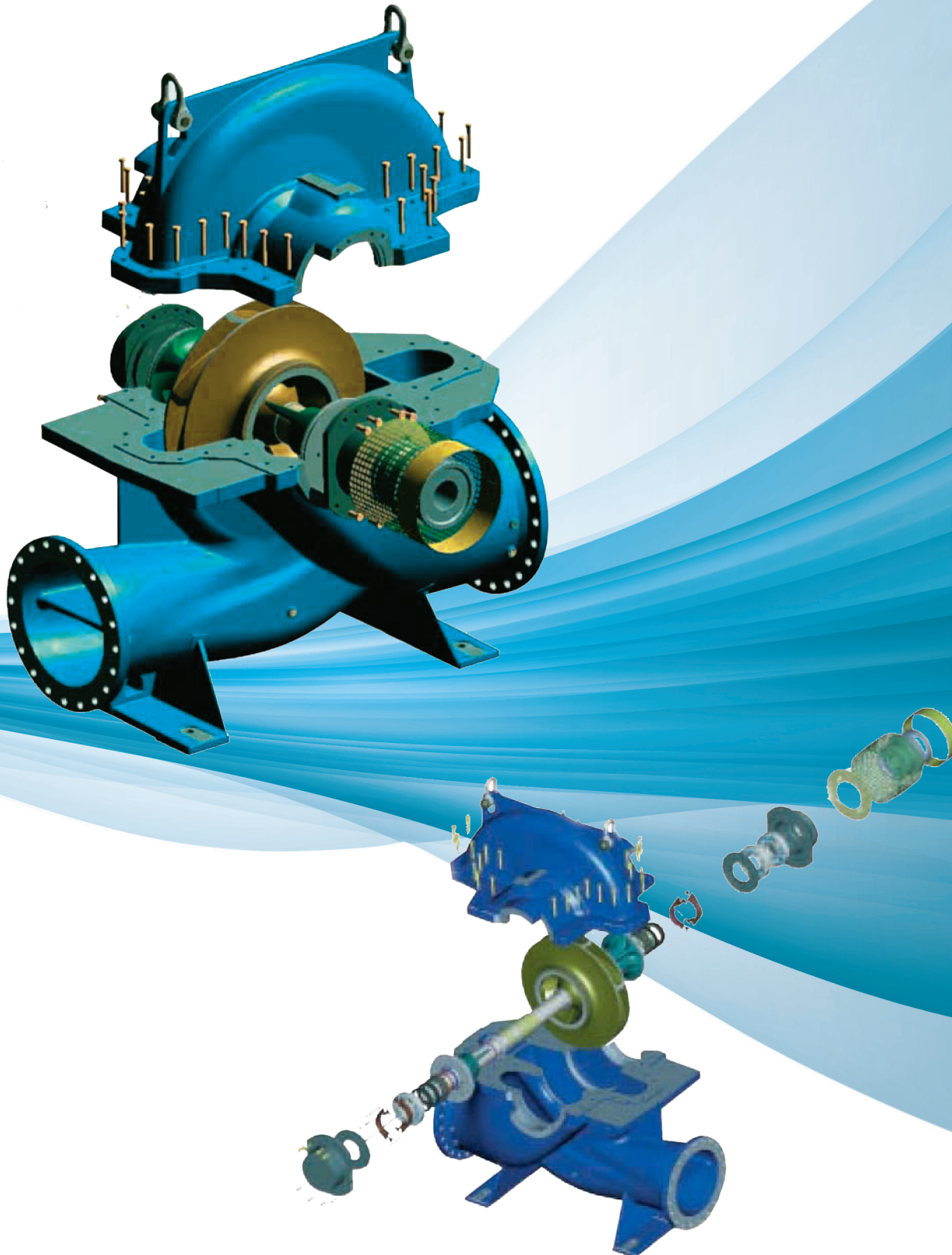
Go to www.flofab.com in Our Products Section to see the Master Spec - <http://www.arcomnet.com/masterspec/>





SERIES 4800/4900

● Exploded View



Go to www.flofab.com in Our Products Section to see the Master Spec - <http://www.arcomnet.com/masterspec/>

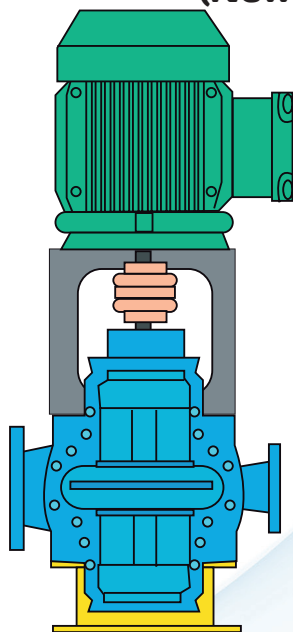




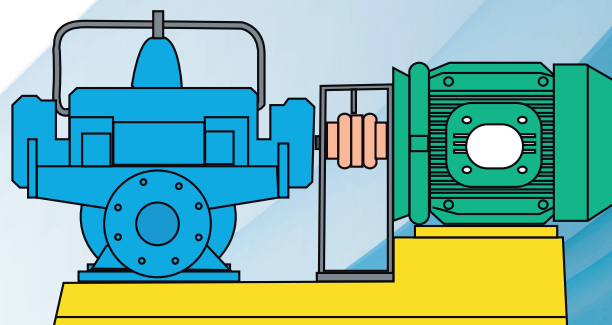
SERIES 4800/4900

● Product Features

Series 4800/4900 V (New Generation)



Series 4800/4900 H (New Generation)



Features and Benefits

Application: The series 4800 are double suction split case type and are most commonly applied for heating and air conditioning systems or other industrial applications.

Features and Benefits

The axially split volute casing of this series makes this pump especially easy to service. Inspection of the rotor assembly is possible without removing the pump from the piping. When assembling, the locking of the upper part takes place automatically.

Innovative Casing: Hydraulically optimized casing in several material variants.

Seal Appropriate for the Application: Mechanical seal or asbestos-free gland packing suitable to the application.

Low Vibration: Small bearing distance and short rotors for low vibration operation.

Variable Components: Same sealing and bearing housing, bearings and seals on both sides

Power Impeller: Minimum axial thrust for best hydraulic values.

Long-Life Bearings: Covered, grease lubricated rolling element bearings for long operating life.

Operating Data

Sizes: (DN) 80 to 350 mm (3" to 14")

Flow: (Q) up to 1100L/s (17 000 USGPM)

Head: (H) up to 600 PSI(4136 kPa), up to 190m (625 ft)

Maximum Operating Pressure: (P) up to 225°F/107°C, 250°F/120°C

Maximum Operating Temperature: (t) up to 1204 kPa/175 PSI, 1720kPa/250 PSI

Speed: (n) up to 3450RPM





● Product Informations

Construction Features

Bearing Bracket: Shaft is a high grade alloy steel for highest yield and tensile strength, precision turned, grounded and polished. The ball bearing assemblies employ precision over-size bearings front and back to handle thrust and radial loads. These bearings are factory greased for longer lasting trouble-free operation. The bearing assemblies can be removed for maintenance without disturbing the piping.

Casing: The casing is of double-volute design, accomplishing two functions: First: radial impeller loads are reduced, for smaller bearing loads, and less power loss. Second: higher pump efficiencies are obtained over a greater range of flow.

Coupling: Rugged in construction, longer bearing, motor and pump life as well as smooth, quiet operation of both motor and pump are assured. Simple in design and easily installed, the couplings are unaffected by abrasives, dirt or moisture. There is no need for lubrication or maintenance. The non-metallic sleeve acts as a barrier insulating the motor from the pump, a coupling guard is supplied as standard equipment.

Motors: Only the highest quality name brand motors specially selected for quietness are used on series 4800/4900 pumps. Ball bearing motors are standard. Motors are 1150, 1750 or 3450 RPM. The motors are sized so that the maximum brake Horsepower output required is less than allowed by the motor manufacturer's warranty.

Base: The base is constructed of structural steel channel.

Suction and Discharge Connections: Located on the sides of the casing, which results in ease of maintenance and piping.

Mechanical Seals: The mechanical seals used in series 4800/4900 pumps are specially selected and as applied to these pumps are suitable for water temperatures up to 225°F / 107°C, 250°F / 120°C. The carbon rotating member and ceramic stationary member with precision lapped surfaces insure long life and positive prevention of leakage. Access plate in the front of the case readily allows seal replacement when required, without disturbing piping, bearing assembly, coupling or motor.

Impeller: Enclosed bronze impeller for double suction, is machined all over for greatest efficiency. All impellers are hydraulically balanced to assure minimum thrust.

Wearings: Bronze impeller or casing wearings are supplied as standard. These wearings are replaceable and prevent costly wear to both the casing and the impeller.



● Product Characteristics

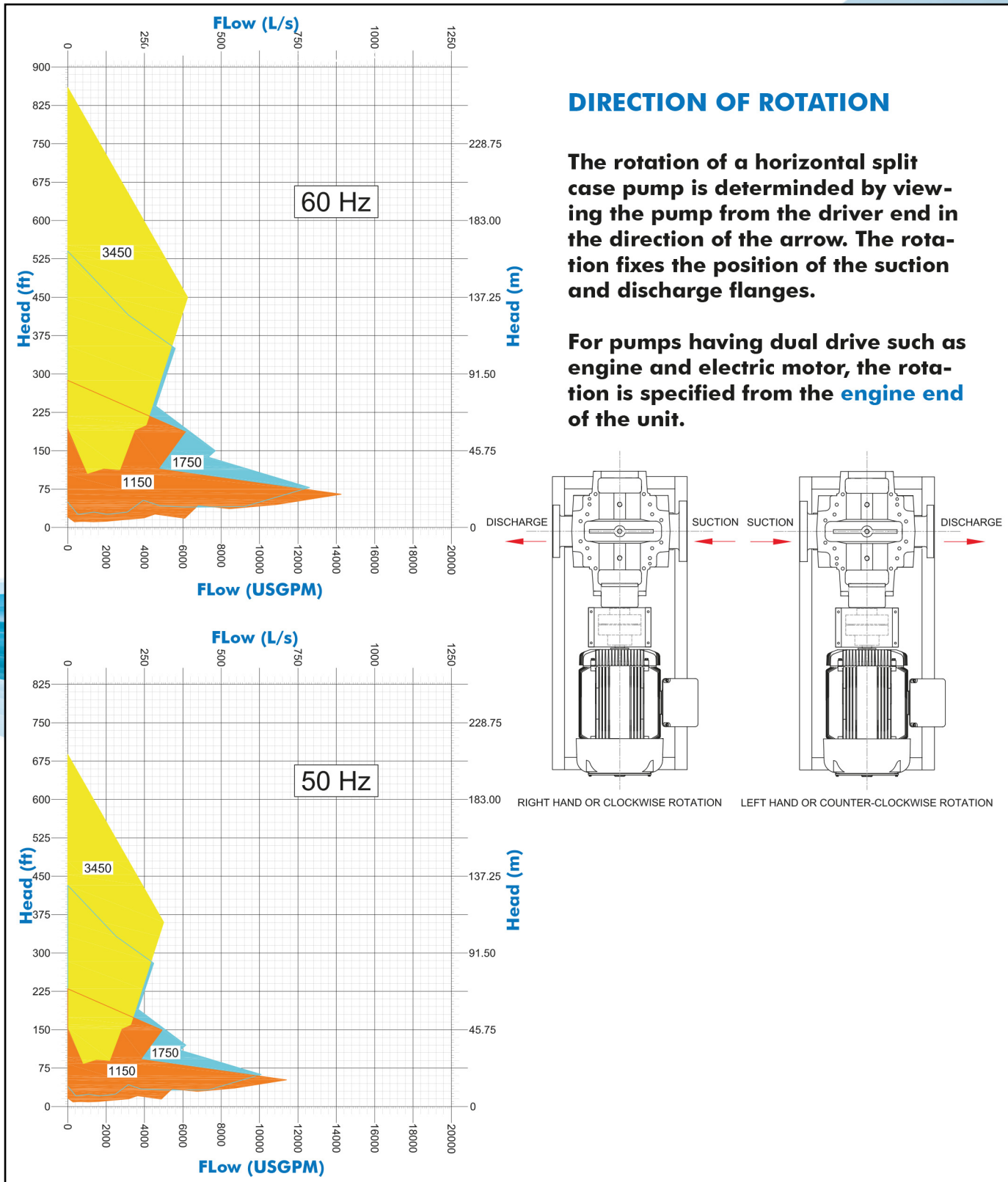
Models	1150 RPM			1750 RPM			3450 RPM		
	MAX. FLOW USGPM	LOW HEAD ft	SHUT-OFF HEAD ft	MAX. FLOW USGPM	LOW HEAD ft	SHUT-OFF HEAD ft	MAX. FLOW USGPM	LOW HEAD ft	SHUT-OFF HEAD ft
<input type="checkbox"/> 5 X 3 - 8.4	435	17.5	34	660	41	79	1325	165	315
<input type="checkbox"/> 5 X 3 - 9.84	590	35	51,5	900	80	119	1800	325	475
<input type="checkbox"/> 5 X 3 - 13.58	525	57	87	800	130	203	1725	525	810
<input type="checkbox"/> 6 X 4 - 10.0	810	21	48	1240	49	111	2480	200	440
<input type="checkbox"/> 6 X 4 - 12.20	810	52	82	1225	120	190	2450	480	760
<input type="checkbox"/> 6 X 4 - 14.76	850	74	126	1300	170	294	3500	190	420
<input type="checkbox"/> 6 X 4 - 16.06	770	82	128	1130	192	295	6250	450	860
<input type="checkbox"/> 8 X 5 - 9.64	1155	21	45	1750	48	105	--	--	--
<input type="checkbox"/> 8 X 5 - 11.81	1380	37	69	2125	85	160	--	--	--
<input type="checkbox"/> 8 X 5 - 15.15	1500	75	102	2300	175	260	--	--	--
<input type="checkbox"/> 8 X 5 - 18.0	1440	140	180	2200	325	420	--	--	--
<input type="checkbox"/> 8 X 6 - 10.94	2125	27	60	3225	63	140	--	--	--
<input type="checkbox"/> 8 X 6 - 13.58	2050	49	93	3125	112	215	--	--	--
<input type="checkbox"/> 8 X 6 - 17.87	2300	110	157	3500	250	363	--	--	--
<input type="checkbox"/> 8 X 6 - 21.33	2550	170	235	3800	390	540	--	--	--
<input type="checkbox"/> 10 X 8 - 12.7	3400	37	90	5200	88	207	--	--	--
<input type="checkbox"/> 10 X 8 - 16.22	3175	80	128	4800	185	297	--	--	--
<input type="checkbox"/> 10 X 8 - 20.7	3700	152	215	5600	350	500	--	--	--
<input type="checkbox"/> 12 X 10 - 14,76	4400	47	108	7400	110	250	--	--	--
<input type="checkbox"/> 12 X 10 - 17.91	5000	65	158	7700	150	367	--	--	--
<input type="checkbox"/> 12 X 10 - 18.18	5650	100	174	8600	230	405	--	--	--
<input type="checkbox"/> 12 X 10 - 23.7	6150	187	287	--	--	--	--	--	--
<input type="checkbox"/> 12 X 12 - 12.12	5400	37	75	8100	73	175	--	--	--
<input type="checkbox"/> 14 X 12 - 13.3	4400	28	70	6700	67	161	--	--	--
<input type="checkbox"/> 16 X 12 - 17.32	8400	65	187	--	--	--	--	--	--
<input type="checkbox"/> 16 X 14 - 15.03	6350	34	95	12600	78	220	--	--	--
<input type="checkbox"/> 18 X 16 - 17.2	10625	59	127	--	--	--	--	--	--
<input type="checkbox"/> 20 X 20 - 15.2	10700	59	127	--	--	--	--	--	--
<input type="checkbox"/> 20 X 20 - 18.3	14250	65	140	--	--	--	--	--	--



SERIES 4800/4900

● Performance Curves

Series 4800 & 4900 (New Generation)





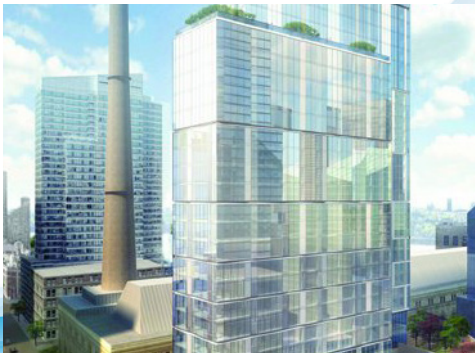
We are proud supplier for the following completed and on going projects :



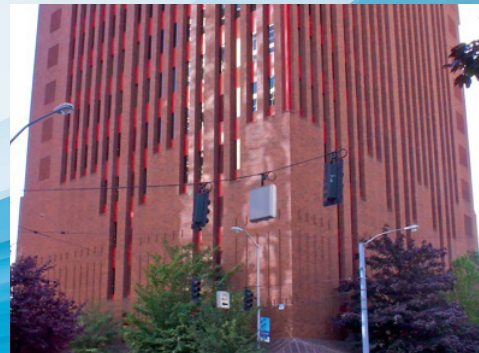
Ville de Montreal
85 Notre-Dame Street E,
Montreal, QC, CA



College de Maisonneuve
3800 Sherbrooke Street E,
Montreal, QC, CA



Riverside Center Building 5
1 West End Avenue
NY, US



Building 2101
2101 2nd Avenue, Seattle,
Washington, Belltown

Sales and Service:

Quebec, Canada
Tel. : (450) 621-2995
Fax : (450) 621-4995

Lake Worth
Florida, USA
33467-5749

Toronto, Canada
Tel. : +1 (647) 544-2995

www.flofab.com

SERVICE 24/7 : parts@flofab.com

