



**SUBMITTAL**

**TYPE:** SEP ASME AIR SEPARATOR WITHOUT STRAINER

**MODELS:** SEP 2 TO SEP24

**Submittal Sheet No. B-3301**

Date 11-00

JOB \_\_\_\_\_

**Flo Fab** Representative \_\_\_\_\_

Unit Tag No. \_\_\_\_\_

Order No. \_\_\_\_\_

Date \_\_\_\_\_

Engineer \_\_\_\_\_

Submitted By \_\_\_\_\_

Date \_\_\_\_\_

Contractor \_\_\_\_\_

Approved By \_\_\_\_\_

Date \_\_\_\_\_

**DESCRIPTION**

Flo Fab SEP Vortex type Air Separators eliminate air quickly and efficiently from open and closed loop heating/cooling systems. Water enters and exits through unique "tangential" connections, which promote a low velocity swirling effect in the center of the unit. Natural centrifugal forces allow the heavier air-free water to move towards the outer edges while entrained air is captured within the "eye" of the vortex and released out the top of the separator. The water then exits near the bottom of the unit, bubble free, protecting the system against the noise, corrosion, and damage commonly caused by entrained air.

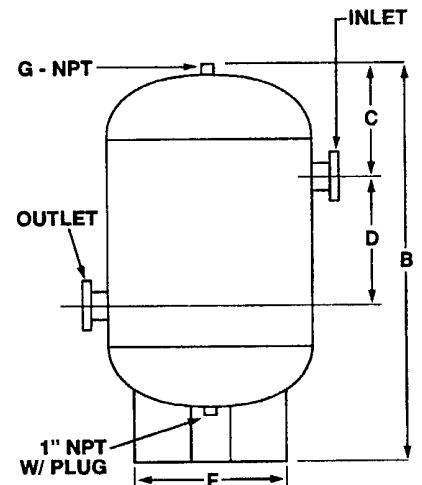
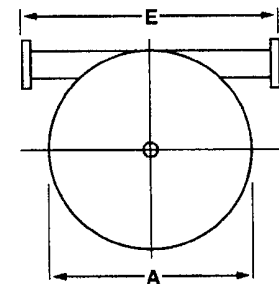
**CONSTRUCTION**

Shell: Carbon steel  
Heads: Carbon steel

**PERFORMANCE LIMITATIONS**

Maximum Design Pressure: 125 PSIG  
Maximum Design Temperature: 450°F

Model Number	Max GPM	Conn. Size	Type	Dimensions in inches							Approx. Lbs.
				A	B	C	D	E	F	G	
SEP 2	56	2	NPT	12	22 1/2	5 1/2	8 1/2	16 5/8	9 1/2	1 1/4	50
SEP 2-1/2	90	2.5	NPT	12	22 1/2	5 1/2	8 1/2	16 5/8	9 1/2	1 1/4	55
SEP 3	190	3	FLANGED	12	22 1/2	5 3/4	8	19 3/4	9 1/2	1 1/4	60
SEP 4	300	4	FLANGED	14	32	9 1/8	10 3/4	21 3/4	11 1/2	1 1/2	90
SEP 5	530	5	FLANGED	14	32	9 1/8	10 3/4	21 3/4	11 1/2	1 1/2	148
SEP 6	850	6	FLANGED	20	44	13 1/4	14 1/2	28	18	2	191
SEP 8	1900	8	FLANGED	20	44	13 1/4	14 1/2	28	18	2	379
SEP 10	3200	10	FLANGED	30	60 1/2	19	20	41	24	2	598
SEP 12	4800	12	FLANGED	30	60 1/2	19	20	41	24	2	947
SEP 14	6100	14	FLANGED	36	78	22	31 1/2	46 3/8	30	2	1680
SEP 16	8000	16	FLANGED	48	108	30	40	60	38	2	2300
SEP 18	9700	18	FLANGED	54	124	33	50	66	44	2	3235
SEP 20	12000	20	FLANGED	60	138	35	60	72	50	2	5100
SEP 22	15000	22	FLANGED	66	150	38	66	78	56	2	6150
SEP 24	17000	24	FLANGED	66	150	38	66	80	56	2	6400



**TYPICAL SPECIFICATION**

Furnish and install as shown on plans, a vortex type air separator Model SEP \_\_\_\_\_ sized for \_\_\_\_\_ GPM, with \_\_\_\_\_" (NPT / Flanged) tangential connections, as manufactured by Flo Fab. The air separator shall be designed in accordance with the latest revisions of the ASME Code for Boilers and Pressure Vessels, Section VIII, Division 1, and shall be constructed and stamped for 125 PSI working pressure @ 450°F. A blowdown connection shall be provided to facilitate routine cleaning of the unit. Each air separator shall be Flo Fab SEP \_\_\_\_\_ or approved equal.