

Pressure Vessels

BT Series

Replaceable Bladder Expansion Tank
with Bottom System Connection

RDT Series

Fixed Bladder
Expansion Tank

SEP Series

Vortex - Tangential
Air Separator

ADSR/AD Series

In-Line Air/Dirt Separator
(With or Without Strainer)

RLU/RWU Series

Hot Water
Storage Tank

CBT Series

Buffer Tank



www.flofab.com

TABLE OF CONTENTS

RDT EXPANSION TANKS.....	2
BT EXPANSION TANKS.....	3
INSTALLATION OF TANKS.....	4
SEP VORTEX TANGENTIAL AIR SEPARATOR.....	5-7
ADSR/AD IN-LINE AIR/DIRT SEPARATOR.....	8-13
RLU HOT WATER STORAGE TANK.....	15-20
RWU HOT WATER STORAGE TANK.....	21-24
CBT BUFFER TANK.....	25-26

HISTORY

Flo Fab was established in 1981 by Denis Gauvreau who created and developed the products line and constantly being perfected by Marc Gauvreau, as well as by a team of professional engineers and designers. It's a combination of existing designs from several renowned products and the innovative ideas of a new generation professionals.

Through the years, Flo Fab has acquired several companies and service entities including : AQUA-PROFAB (ASME Tanks manufacturer), MÉNARD, LÉONARD ÉLECTRIQUE, PMA. , Furthermore Flo Fab purchased equipment, fabrication designs and patterns from IDEALCO, a manufacturer of shell and tube type heat exchangers.

The after sales services, sales, engineering, R&D, production, quality control, accounting and administration departments of all the above companies share the same location.

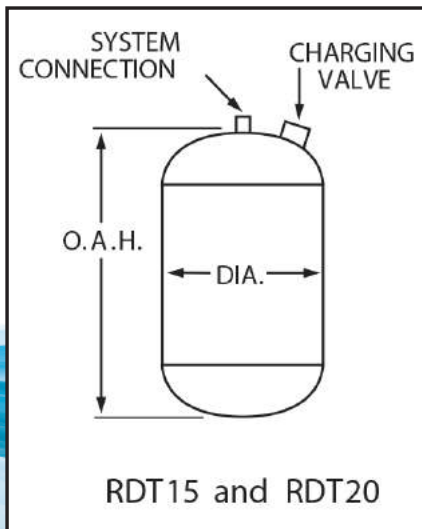
In December 2014, Marc Gauvreau, son of the founder, acquired all shares of The company. Flo Fab and is constantly investing in new state of the art innovations new product like the XRI series and Prefab Skid for Hydronic Heating & cooling system, pumping systems. This has allowed Flo Fab to retain competent and experienced staff of professionals with varied and specialized abilities that constantly work on improving our existing products and add new engineered solutions that exceeding customer's expectations .

Flo Fab has grown quite rapidly and now proudly offers of a wide range of products available directly from one manufacturer. This includes pumps & pump packages, tanks, heat exchangers & hydronic accessories. This allows each project stakeholders to enjoy economical savings, peace of mind, best value for their investment and optimized total cost of ownership.



Product Specifications RDT

Flo Fab type RDT expansion tanks are designed for use in Hydronic heating/cooling systems to absorb the expansion force resulting from the changes in temperature of the heating/cooling fluid. As the system fluid expands, it is forced into the precharged tank to the maximum system pressure. The precharged air cushion then forces the fluid back into the system as it contracts. The extra heavy butyl diaphragm keeps the fluid permanently isolated from the precharged air cushion. This arrangement eliminates water logging and absorption of air into the system. It also helps prevent air bound terminal units, excessive corrosion, inefficient balancing and pump cavitation over the life of the system. The large acceptance volume allows maximum storage and reduction of up to 80% in tank size. Energy consumption is reduced by eliminating unnecessary system water volume.

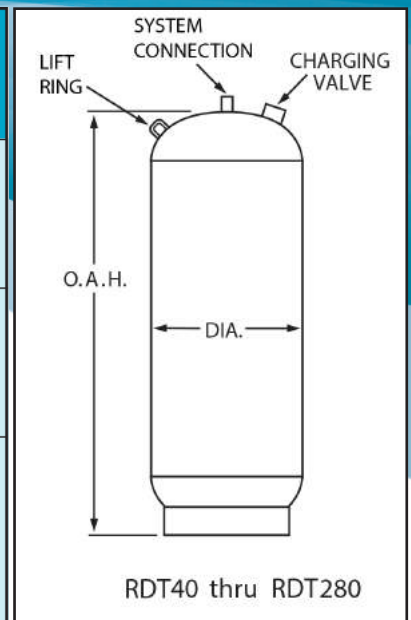


RDT Expansion Tank

ASME fixed diaphragm type precharged expansion tanks for commercial and industrial heating/cooling systems available in sizes from 7.8 gallons to 211 gallons.

- ASME Section VIII construction and label
- Heavy duty butyl diaphragm
- Permanent separation of air and water
- Smaller sizes for easier handling, and saves space and installation costs
- Can be manifolded for more capacity
- Factory precharged 12 PSI and field adjustable

Model Number	Tank Volume (gal.)	Acceptance Volume (gal.)	N.P.T. System Connection	Max. Oper. Pressure (psi)	DIMENSIONS		Approx. Weight (lbs)
					Diameter (in.)	Height (in.)	
RDT 15	7.8	5.0	3/4"	150	12	19	42
RDT 20	10.9	5.0	3/4"	150	12	26	52
RDT 40	25	12.0	1"	150	14	42	84
RDT 60	35	12.0	1"	150	14	57	97
RDT 80	45	24.0	1"	125	20	38	148
RDT 100	60	24.0	1"	125	20	49	175
RDT 120	70	52.5	1 1/2"	125	24	46	259
RDT 144	80	52.5	1 1/2"	125	24	49	268
RDT 180	90	52.5	1 1/2"	125	24	52	283
RDT 200	115	52.5	1 1/2"	125	24	66	325
RDT 240	140	52.5	1 1/2"	125	24	78	362
RDT 260	158	56.0	1 1/2"	125	30	61	591
RDT 280	211	84.0	1 1/2"	125	30	79	752



● Product Specifications BT

BT Expansion Tank

ASME replaceable diaphragm type expansion tanks for commercial and industrial heating/cooling systems. Space saving tank comes in sizes of 10 to 3963 gallons.

- ASME Section VIII construction and label
- Permanent separation of air and water
- Never waterlogs
- Water is "in the bag." Steel tank never touches water and is not subject to corrosion
- Replacement diaphragm
- Smaller sizes for easier handling, and saves space and installation costs



125 P.S.I. operating pressure
240°F- maximum temperature at tank factory
precharged 12 P.S.I.
Prime painted exterior finish

Model Number	Tank and Acceptance Vol. (Gals)	Dimensions		N.P.T. System Conn.	N.P.T. Aux. Conn.	Shipping Weight Pounds	
		Diame-ter (in.)	Height (in.)				
BT-12	10	12	25	3/4"	-	40	
BT-25	10	12	25		-	40	
BT-35	10	12	25		-	40	
BT-50	13	14	25		-	50	
BT-75	23	16	37	1"	1/2"	90	
BT-100	35	20	37			125	
BT-130	35	20	37			125	
BT-132	35	20	37			125	
BT-160	53	24	43	1 1/2"	-	210	
BT-200	53	24	43		-	210	
BT-250	79	24	55		-	225	
BT-400	106	30	49		3/4"	-	300
BT-500	132	30	57			-	335
BT-600	158	30	65			-	360
BT-800	211	32	76			-	475
BT-1000	264	36	74		-	710	
BT-1200	317	36	86		-	720	
BT-1400	370	36	99		-	875	
BT-1600	422	48	72	-	1100		
BT-2000	528	48	85	-	1280		
BT-2500	660	48	102	2	-	1435	
BT-3000L	792	48	122		-	1550	
BT-3000S	792	60	80		-	2169	
BT-4000	1056	60	102		-	2638	
BT-5000	1320	60	125	-	3246		
BT-7500	1980	72	127	3	-	4005	
BT-10000	2640	72	159		-	4845	
BT-15000	3963	72	233		-	5925	

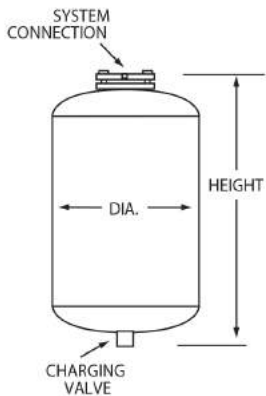


Product Specifications

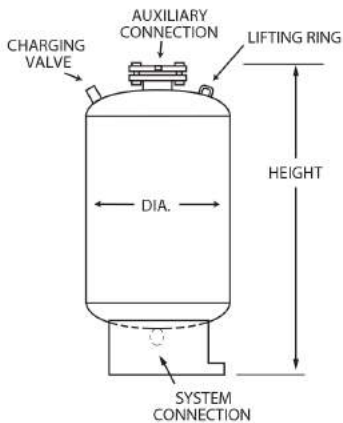
BT

OPTIONS :

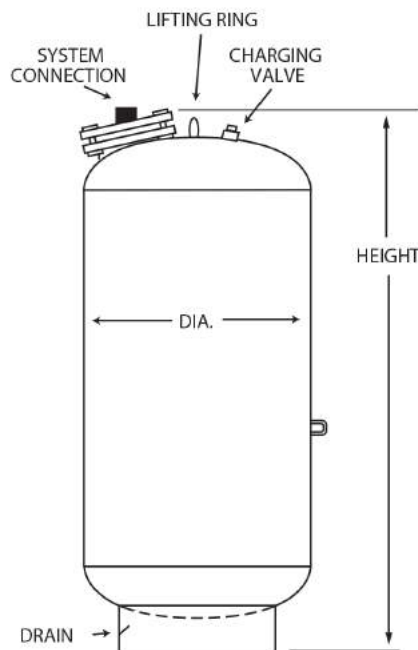
- Sight glass
- Antiseismic brackets
- External epoxy Finish
- Horizontal with saddles floor mounting
- Horizontal with straps ceiling mounting
- Off centered system connection for Hydropneumatic tank
- 304 Stainless steel connection for Hydropneumatic tank (For Potable Water)
- 316 Stainless steel connection for Hydropneumatic tank
- 150 PSI rating
- 200 PSI rating
- 500 PSI rating



BT12 and BT50



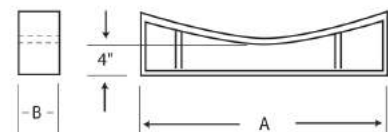
BT75 and BT800



BT 1000 thru
BT1500 0

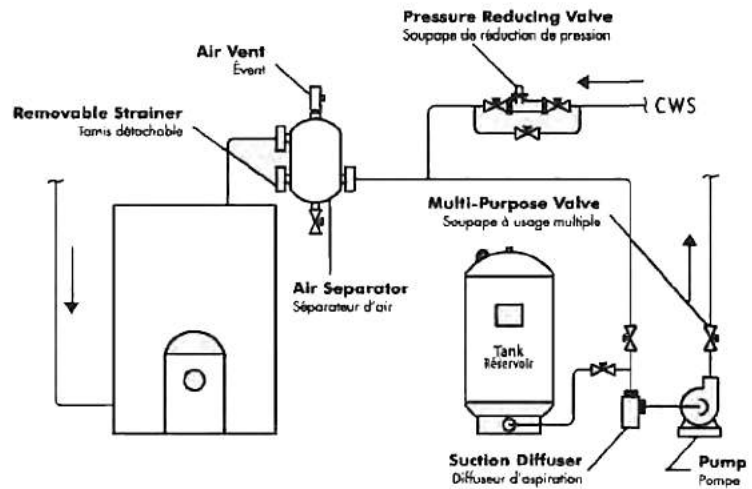
Optional Saddles

Size	A	B	Weight
12	10	3	18
14	11	3	19
16	13	3	21
20	14	4	25
24	17	4	28
30	21	5	38
36	25	5	52



SIMPLE INSTALLATION

INSTALLATION SIMPLE

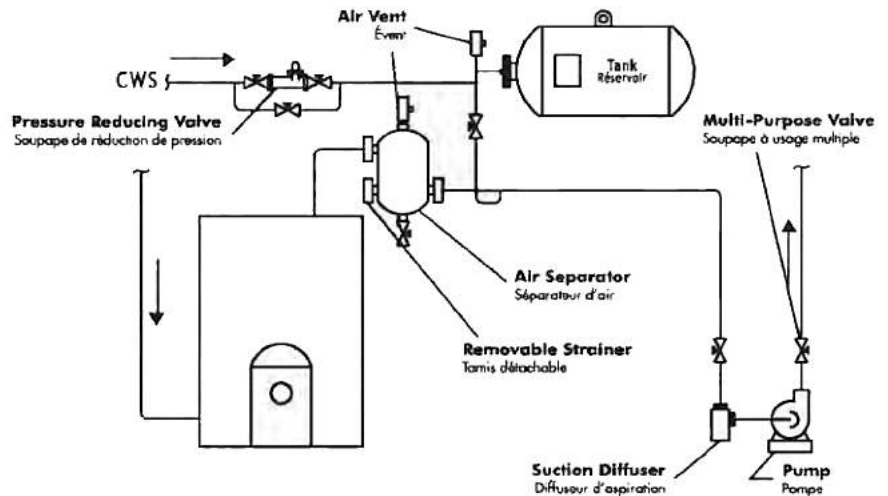


HORIZONTAL INSTALLATION

(OPTIONAL)

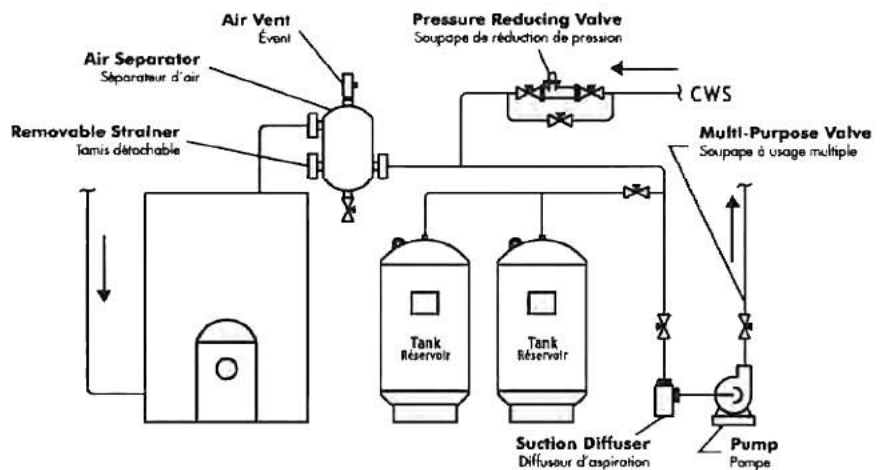
INSTALLATION HORIZONTALE

(OPTIONNELLE)



MULTI INSTALLATION

INSTALLATION MULTIPLE





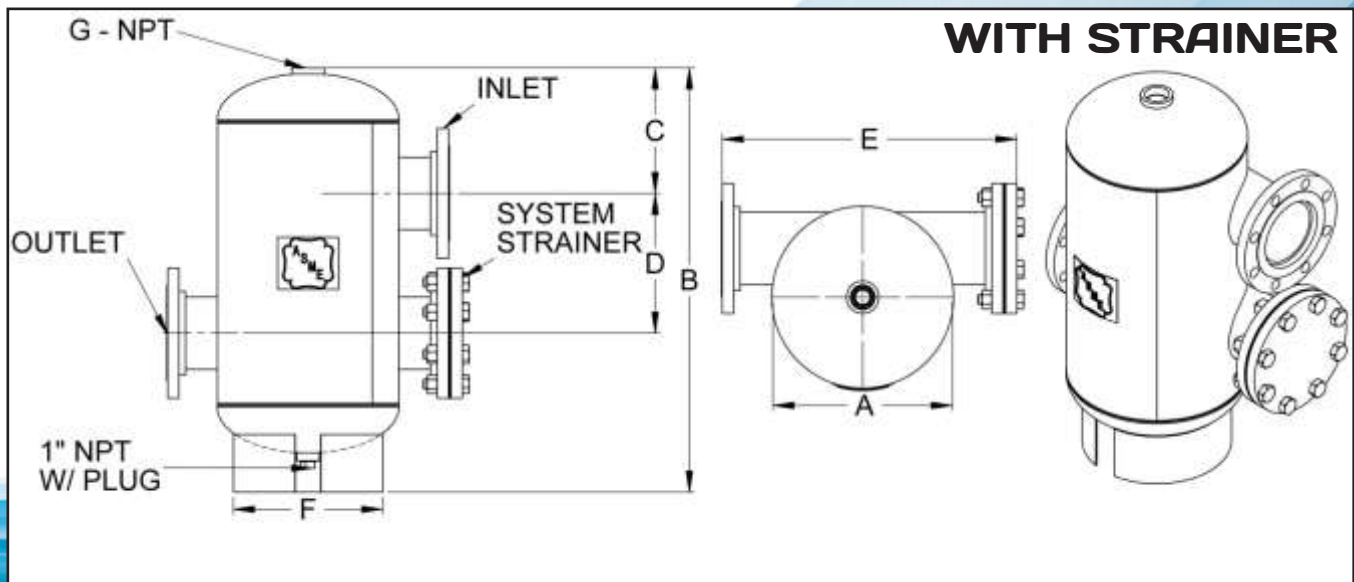
Product Specifications

SEP

Flo Fab SEP ASME Vortex type Air Separators eliminate air quickly and efficiently from open and closed loop heating/cooling systems. Water enters and exits through unique "tangential" connections, which promote a low velocity swirling effect in the center of the unit. Natural centrifugal forces allow the heavier air-free water to move toward the outer edges while entrained air is captured within the "eye" of the vortex and released out of the top of the separator. The bubble-free water then exits near the bottom of the unit, protecting the systems against the noise, corrosion, and damage commonly caused by entrained air. SEP units also include system strainer.

Performance Limitations

Maximum Design Temperature: 450°F
Maximum Design Pressure: 150 PSI (2"-8" inlet/outlet) 125 PSI (10"-30" inlet/outlet)
*200 & 250 PSIG available



Dimensions and Weights

Model Number	Dimensions in inches								Approx. Shipping Wt (lbs)
	Connection Size	A	B	C	D	E	F	G	
SEP-2-S	2 NPT	12	24 1/2	6 1/3	8 1/2	16 5/8	9 1/2	1 1/4	48
SEP-2.5-S	2.5 NPT		25	6 7/8	8	19 3/4			61
SEP-3-S	3		32	9 1/8	10 3/4	21 3/4			92
SEP-4-S	4	14	32	9 1/8	10 3/4	21 3/4	11 1/2	1 1/2	99
SEP-5-S	5								132
SEP-6-S	6	20	44	13 1/4	14 1/2	28	18	2	190
SEP-8-S	8								308
SEP-10-S	10	30	60 1/2	19	20	41	24	2	606
SEP-12-S	12								812
SEP-14-S	14	36	78	22	31 1/2	46 3/8	30	2	1138
SEP-16-S	16	48	108	30	40	60	38		2520
SEP-18-S	18	54	124	33	50	66	44	2	2973
SEP-20-S	20	60	138	35	60	72	50		3904
SEP-22-S	22	66	150	38	66	78	56	2	4684
SEP-24-S	24	66							5003
SEP-30-S	30	72							68

Other size available upon request.

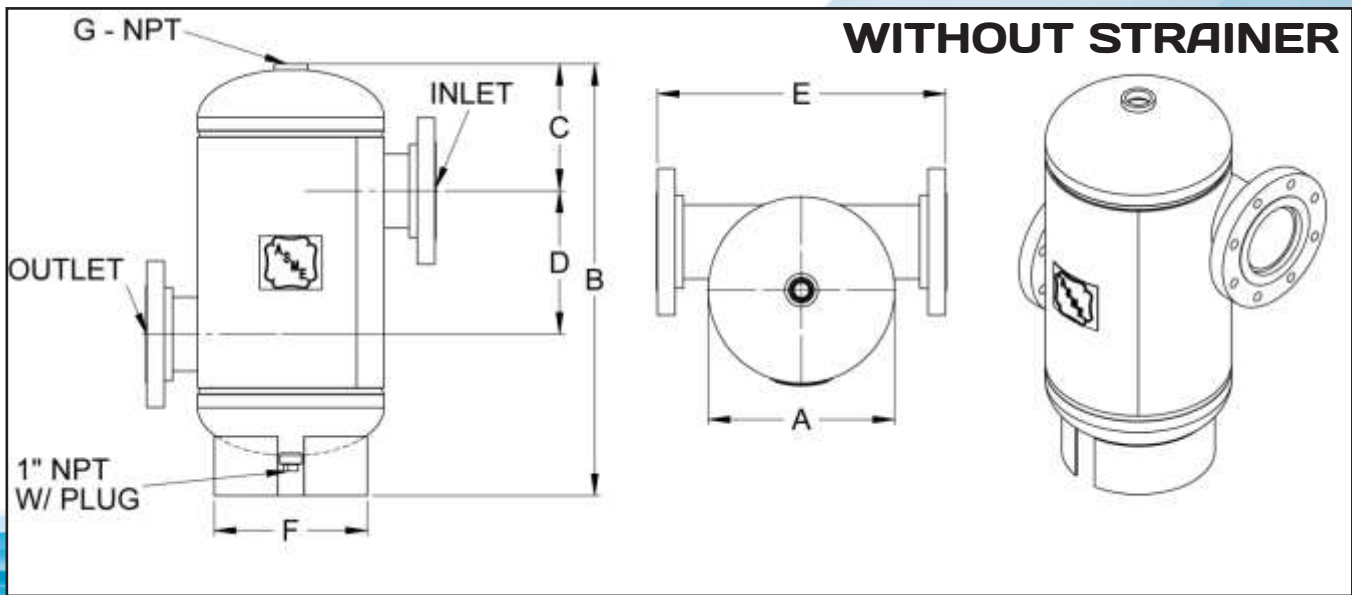
Product Specifications

SEP

Flo Fab SEP ASME Vortex type Air Separators eliminate air quickly and efficiently from open and closed loop heating/cooling systems. Water enters and exits through unique "tangential" connections, which promote a low velocity swirling effect in the center of the unit. Natural centrifugal forces allow the heavier air-free water to move toward the outer edges while entrained air is captured within the "eye" of the vortex and released out of the top of the separator. The bubble-free water then exits near the bottom of the unit, protecting the systems against the noise, corrosion, and damage commonly caused by entrained air. SEP units also include system strainer.

Performance Limitations

Maximum Design Temperature:
450°F
Maximum Design Pressure:
150 PSI (2"-8" inlet/outlet)
125 PSI (10"-30" inlet/outlet)
*200 & 250 PSIG available



Dimensions and Weights

Model Number	Dimensions in inches								Approx. Shipping Wt (lbs)			
	Connection Size	A	B	C	D	E	F	G				
SEP-2-S	2 NPT	12	22 1/2	5 1/2	8 1/2	16 5/8	9 1/2	1 1/4	34			
SEP-2.5-S	2.5 NPT			6 1/4	8	19 3/4			37			
SEP-3-S	3			9 1/8	10 3/4	21 3/4			45			
SEP-4-S	4	14	32	13 1/4	14 1/2	28	18	1 1/2	80			
SEP-5-S	5								175			
SEP-6-S	6	20	44	19	20	41	24	2	210			
SEP-8-S	8								460			
SEP-10-S	10								577			
SEP-12-S	12	30	60 1/2	22	31 1/2	46 3/8	30	2	850			
SEP-14-S	14								1858			
SEP-16-S	16								2490			
SEP-18-S	18	48	108	30	40	60	38	2	3346			
SEP-20-S	20								60	72	50	3879
SEP-22-S	22								66	78	56	4211
SEP-24-S	24	66	150	38	66	80	56	2	7260			
SEP-30-S	30				72				68	84	66	

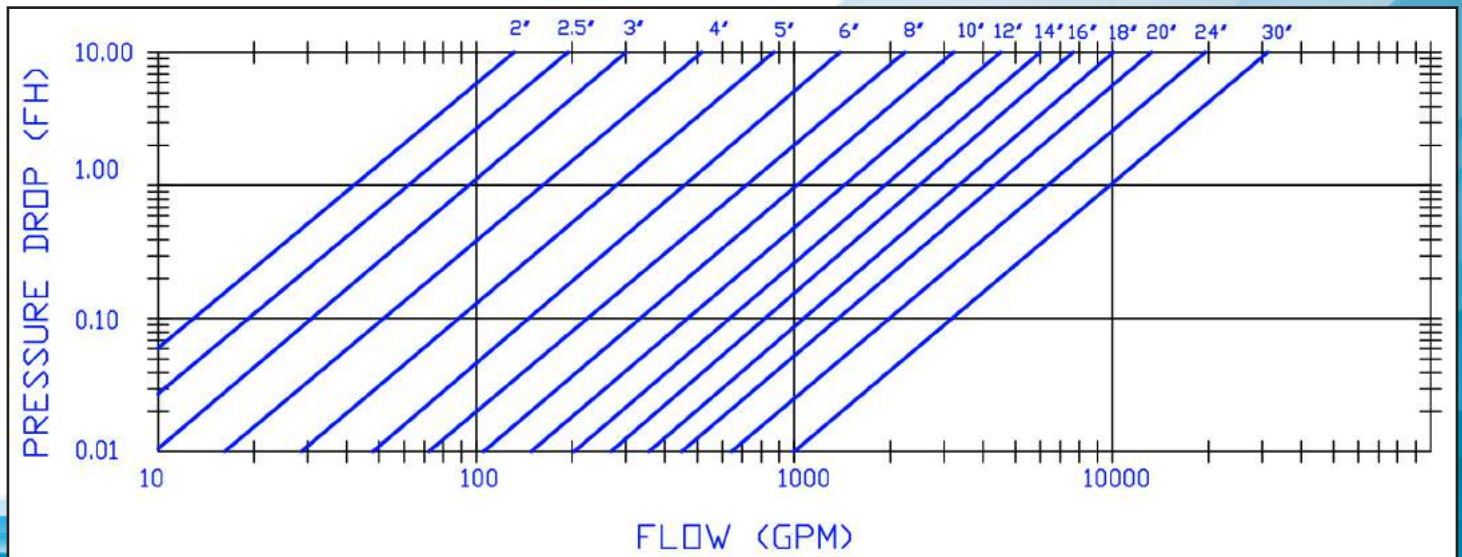
Other size available upon request.



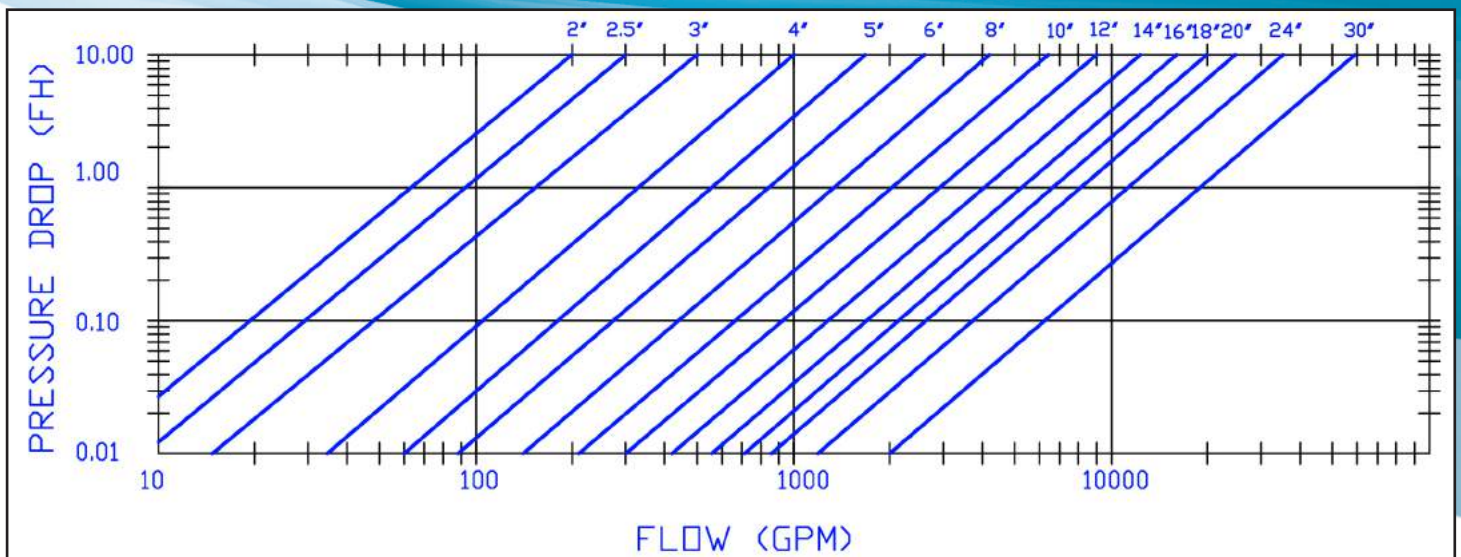
● Performance Curve SEP

Pressure Drop Charts Comparing Feet of Head Versus Flow in Gallons Per Minute for Tangential Flo Fab Air Separators...

With Strainer



Without Strainer





Product Specifications

ADSR

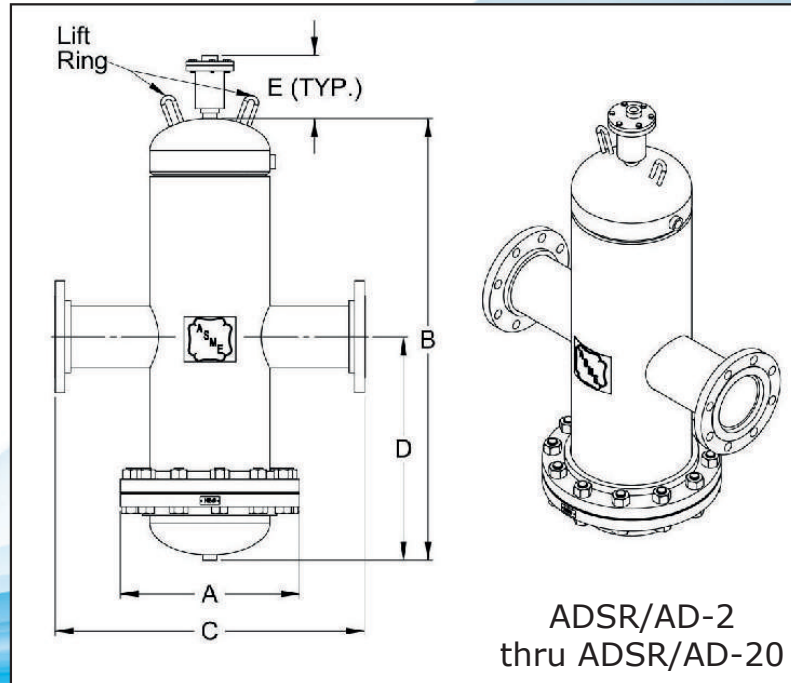
Furnish and install, as shown on plans, a ADSR- _____ Air & Dirt Separator as manufactured by FloFab. Each separator must be designed with a blow down valve, skim valve, and automatic air vent. The separator must also utilize in its design a stainless steel coalescing medium to aid in the separation of air and dirt in the systems entrained water. The separator must be constructed in accordance with most recent addendum of Section VIII Division 1 of the ASME Boiler and Pressure Vessel Code and shall be constructed and stamped for 125 PSI working pressure @ 250°F.

Flo Fab ADSR series Air & Dirt Separators are designed to eliminate entrained air and separate debris associated with start-up and maintenance of any hydronic systems. The design incorporates a skim valve, used to eliminate floating debris, removable end cover for coalescing medium access, and an air vent to automatically release air from the separator.

Performance Limitations

Maximum Design Temperature:
250°F
Maximum Design Pressure:
125 PSIG*

*150, 200 & 250 PSIG available



ADSR/AD-2 thru ADSR/AD-20

Model Number	Dimensions in inches						Approx. Shipping Wt (lbs)	Flow GPM
	Connection Size	A	B	C	D	E		
ADSR-2	2	9	23	15 1/4	11 1/2	8 5/8	100	-
ADSR-2-NPT				9			90	
ADSR-2.5	2.5	10	29	15 3/4	125			
ADSR-2.5-NPT				10 1/2	115			
ADSR-3	3	11	29	20 1/4	150			
ADSR-3-NPT				12 3/4	130			
ADSR-4	4	13 1/2	39	20 5/8	250			
ADSR-4-NPT				15	210			
ADSR-5	5	16	39	27 3/4	19 1/2		310	
ADSR-6	6	19	39	27 3/4	19 1/2		375	
ADSR-8	8	23 1/2	49	33 5/8	24 1/2		700	
ADSR-10	10	27 1/2	65	37 1/2	32 1/2		1000	
ADSR-12	12	32	76	42 1/2	38		1500	
ADSR-14	14	30	78	48	39		1800	
ADSR-16	16	30	78	48	39	1950	2200	
ADSR-18	18	36	78	48	39	2700	10 000	
ADSR-20	20	42	84	56	42	2900	3500	

Other size available upon request.



Product Specifications

ADSR

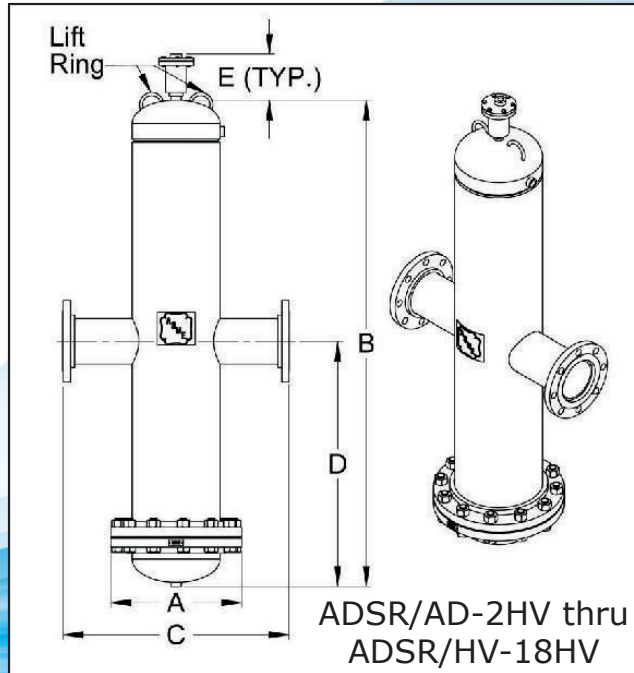
HV

Furnish and install, as shown on plans, a ADSR- _____ -HV High Velocity Air & Dirt Separator as manufactured by Flo Fab. Each separator must be designed with a blow down valve, skim valve, and automatic air vent. The separator must also utilize in its design a stainless steel coalescing medium to aid in the separation of air and dirt in the systems entrained water. The separator must be constructed in accordance with most recent addendum of Section VIII Division 1 of the ASME Boiler and Pressure Vessel Code and shall be constructed and stamped for 125 PSI working pressure @ 250°F.

Flo Fab ADSR-HV (High Velocity) series Air & Dirt Separators are designed to eliminate entrained air and separate debris associated with start-up and maintenance of any hydronic systems. The design incorporates a skim valve, used to eliminate floating debris, removable end cover for coalscing medium access, and an air vent to automatically release air from the separator.

Performance Limitations

Maximum Design Temperature:
250°F
Maximum Design Pressure:
125 PSIG*
*150, 200 & 250 PSIG available

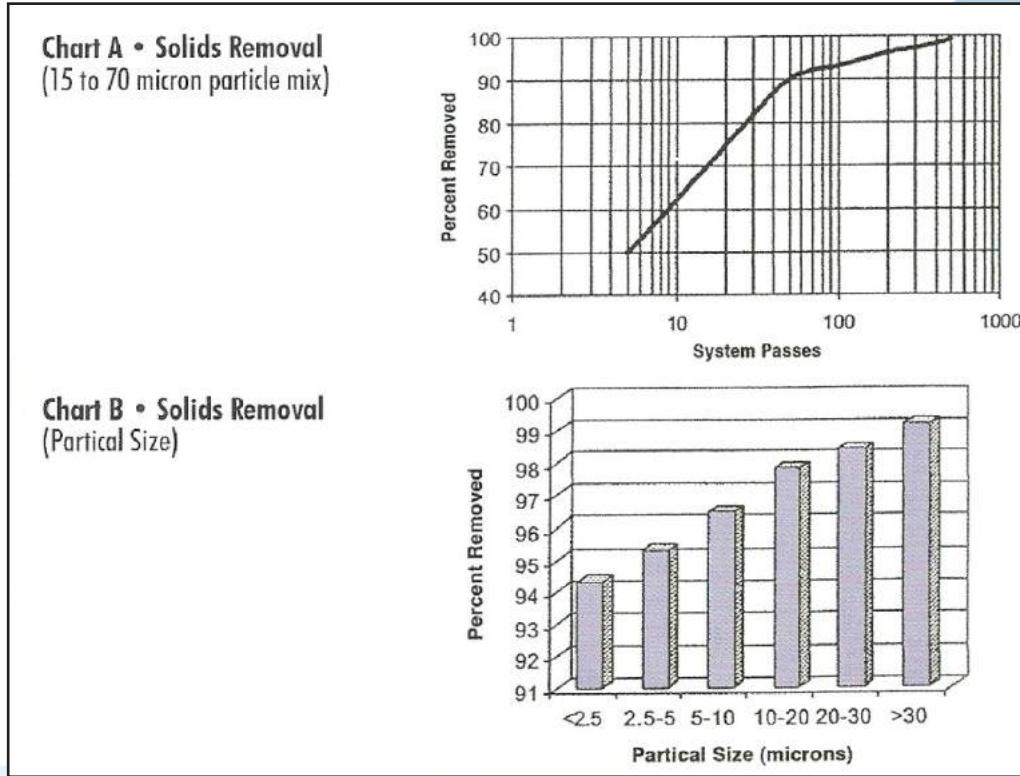


Model Number	Dimensions in inches						Approx. Shipping Wt (lbs)	Flow GPM	
	Connection Size	A	B	C	D	E			
ADSR-2HV	2	9	33	15 1/8	16 1/2	8 5/8	110		
ADSR-2HV-NPT				9			100		
ADSR-2.5HV	2.5	10		15 3/4			140		
ADSR-2.5HV-NPT				10 1/2			125		
ADSR-3HV	3	11	42	20 1/4	21		175		
ADSR-3HV-NPT				12 3/4			155		
ADSR-4HV	4	13 1/2		20 5/8			29 1/2		275
ADSR-4HV-NPT				15					235
ADSR-5HV	5	16	59	27 3/4	29 1/2		475		
ADSR-6HV	6	19					525		
ADSR-8HV	8	23 1/2	75	33 5/8	37 3/4		825		
ADSR-10HV	10	27 1/2	92	37 1/2	46		1275		
ADSR-12HV	12	32	110	42 1/2	55	2050			
ADSR-14HV	14	30	110	48	55	2880	4100		
ADSR-16HV	16	32	110	48	55	2600	5500		
ADSR-18HV	18	36	110	52	55	3010	7100		
ADSR-20HV	20	42	110	56	55	3770	8800		

Other size available upon request.



Performance Curves ADSR



AIR REMOVAL

independent third party laboratory testing has concluded that Flo Fab ADSR/AD Air & Dirt separator will eliminate air to a level at greater than 99.5%. This testing was accomplished with measurements of dissolved oxygen and observation at bubbles over time. Results concluded that within 15 to 45 minutes, 50% at the dissolved oxygen was removed. With sufficient time (less than two hours), the dissolved oxygen level was reduced to less than 0.1%

DIRT REMOVAL

Dirt flowing with the system water is diverted to the ADSR/AD Air & Dirt Separator As this flow enters the unit, dirt particle removal (dependent an system cycles) is measured according to particle size Results from testing are revealed in Charts A and 8 below. From ChortA. 90% of dirt lin the I5 to 70 micron size) is separated and diverted to the bottom of the Wess-Vent. With continual system cycling dirt removal will approach 99%. Chart B reveals the particle size removal percentage in 24 hours of operation For example more than 97% of particles in the 10 to 20 micron size range were separated



Product Specifications

ADSF

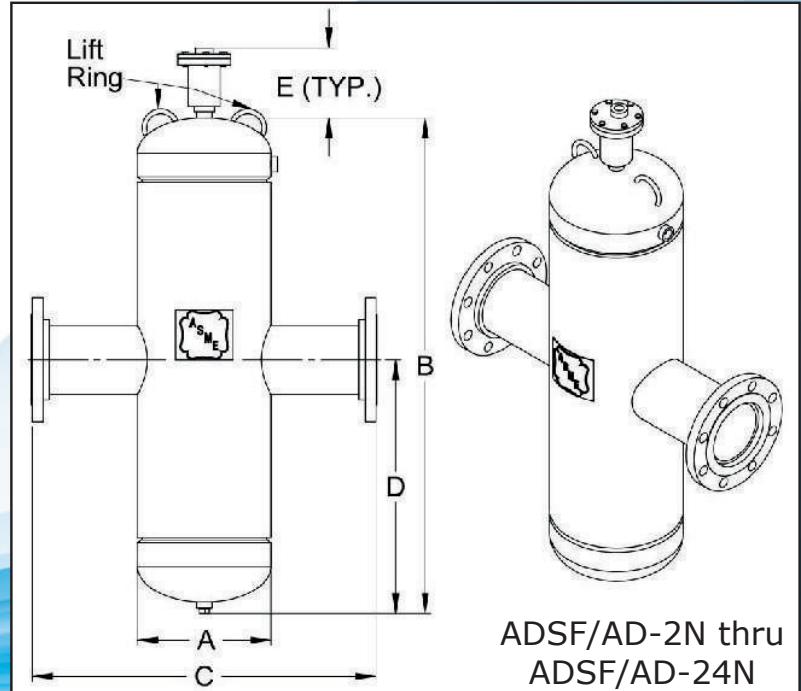
Furnish and install, as shown on plans, a ADSF- _____ -N Air & Dirt Separator as manufactured by Flo Fab. Each separator must be designed with a blow down valve, skim valve, and automatic air vent. The separator must also utilize in its design a stainless steel coalescing medium to aid in the separation of air and dirt in the systems entrained water. The separator must be constructed in accordance with most recent addendum of Section VIII Division 1 of the ASME Boiler and Pressure Vessel Code and shall be constructed and stamped for 125 PSI working pressure @ 250°F.

Flo Fab ADSF-N (Non-Removable) series Air & Dirt Separators are designed to eliminate entrained air and separate debris associated with start-up and maintenance of any hydronic systems. The design incorporates a skim valve, used to eliminate floating debris, and an air vent to automatically release air from the separator.

Performance Limitations

Maximum Design Temperature:
250°F
Maximum Design Pressure:
125 PSIG*

*150, 200 & 250 PSIG available



Dimensions and Weights

Model Number	Dimensions in inches						Approx. Shipping Wt (lbs)
	Connection Size	A	B	C	D	E	
ADSF-2N	2	4 1/2	23	15 1/4	11 1/2	8 5/8	76
ADSF-2N-NPT				9			70
ADSF-2.5N	2.5	5 1/2		15 3/4			99
ADSF-2.5N-NPT				10 1/2			90
ADSF-3N	3	6 1/2	29	20 1/4	14 1/2		114
ADSF-3N-NPT				12 3/4			100
ADSF-4N	4	8 1/2		20 5/8			194
ADSF-4N-NPT				15			182
ADSF-5N	5	10	39	27 3/4	19 1/2		230
ADSF-6N	6	12					255
ADSF-8N	8	16	49	33 5/8	24 1/2		514
ADSF-10N	10	20	65	37 1/2	32 1/2		770
ADSF-12N	12	24	76	42 1/2	38	1080	
ADSF-14N	14	30	73	43 3/8	33	2107	
ADSF-16N	16	30	79 13/16	44 1/2	34 1/8	2790	
ADSF-18N	18	36	108	56	55	3569	
ADSF-20N	20	42	120	61 3/8	61	4445	
ADSF-24N	24	48	144	72	73	6843	

Other size available upon request.



Product Specifications

ADSF HV

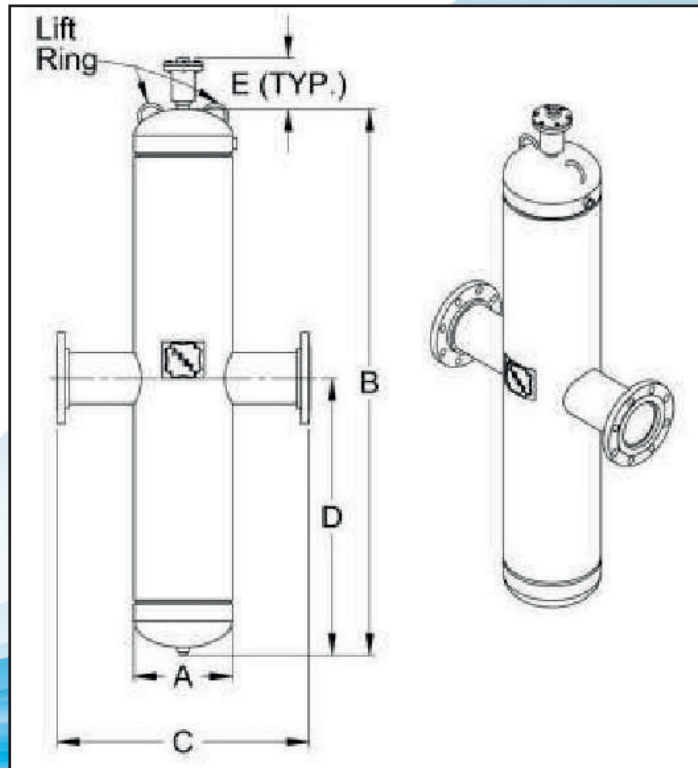
Furnish and install, as shown on plans, a ADSF- _____ -N-HV High Velocity Air & Dirt Separator as manufactured by Flo Fab Company. Each separator must be designed with a blow down valve, skim valve, and automatic air vent. The separator must also utilize in its design a stainless steel coalescing medium to aid in the separation of air and dirt in the systems entrained water. The separator must be constructed in accordance with most recent addendum of Section VIII Division 1 of the ASME Boiler and Pressure Vessel Code and shall be constructed and stamped for 125 PSI working pressure @ 250°F.

Flo Fab ADSF-N-HV (Non-Removeable High Velocity) series Air & Dirt Separators are designed to eliminate entrained air and separate debris associated with start-up and maintenance of any hydro-nic systems. The design incorporates a skim valve, used to eliminate floating debris, and an air vent to automatically release air from the separator.

Performance Limitations

Maximum Design Temperature:
250°F
Maximum Design Pressure:
125 PSIG*

*150, 200 & 250 PSIG available



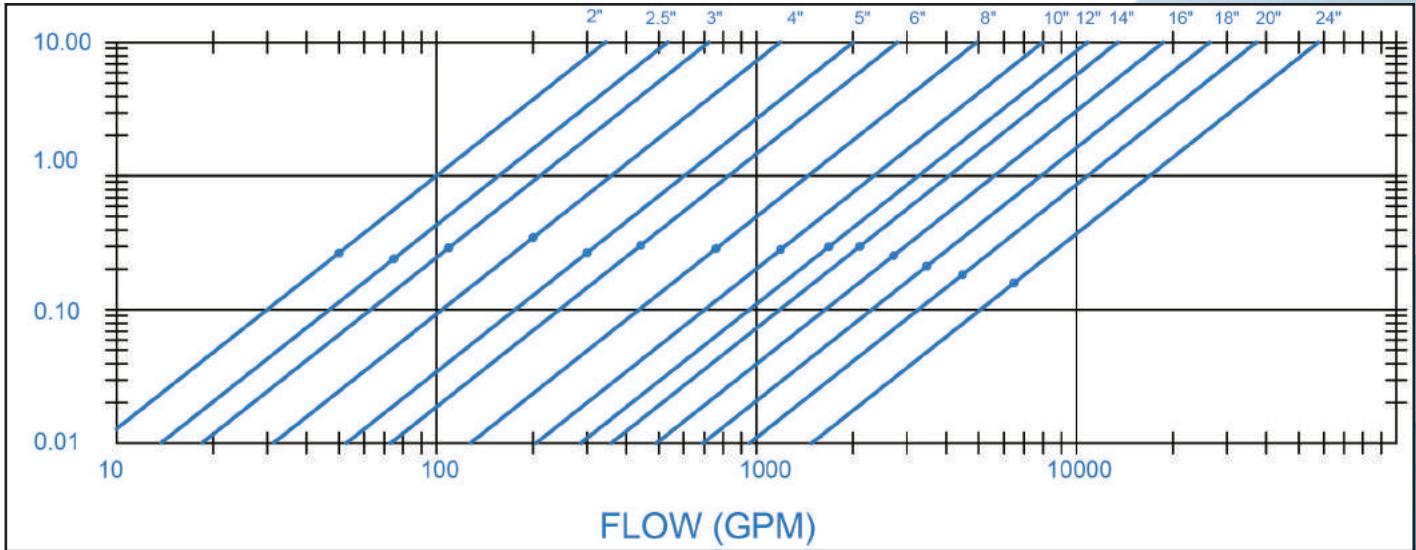
Other size available upon request.

Model Number	Dimensions in inches						Approx. Shipping Wt (lbs)	
	Connection Size	A	B	C	D	E		
ADSF-2N-HV	2	4 1/2	33	15 3/4	16 1/2	8 5/8	100	
ADSF-2N-HV-NPT				9			90	
ADSF-2.5N-HV	2.5	5 1/2		15 3/4			125	
ADSF-2.5N-HV-NPT				10 1/2			115	
ADSF-3N-HV	3	6 1/2	42	20 1/4	21		150	
ADSF-3N-HV-NPT				12 3/4			130	
ADSF-4N-HV	4	8 1/2		20 5/8			21	250
ADSF-4N-HV-NPT				14 3/4				210
ADSF-5N-HV	5	10	59	27 3/4	29 1/2		310	
ADSF-6N-HV	6	12					375	
ADSF-8N-HV	8	16	75	33 5/8	37 1/2		700	
ADSF-10N-HV	10	20	92	37 1/2	46		1000	
ADSF-12N-HV	12	24	110	42 1/2	55	1500		
ADSF-14N-HV	14	36	102 15/16	49 5/8	53 1/4	13	4703	
ADSF-16N-HV	16			51			6264	
ADSF-18N-HV	18			162			56	82
ADSF-20N-HV	20	42	180	61 3/8	91	14	9978	
ADSF-24N-HV	24	48	216	72	109	16	14555	

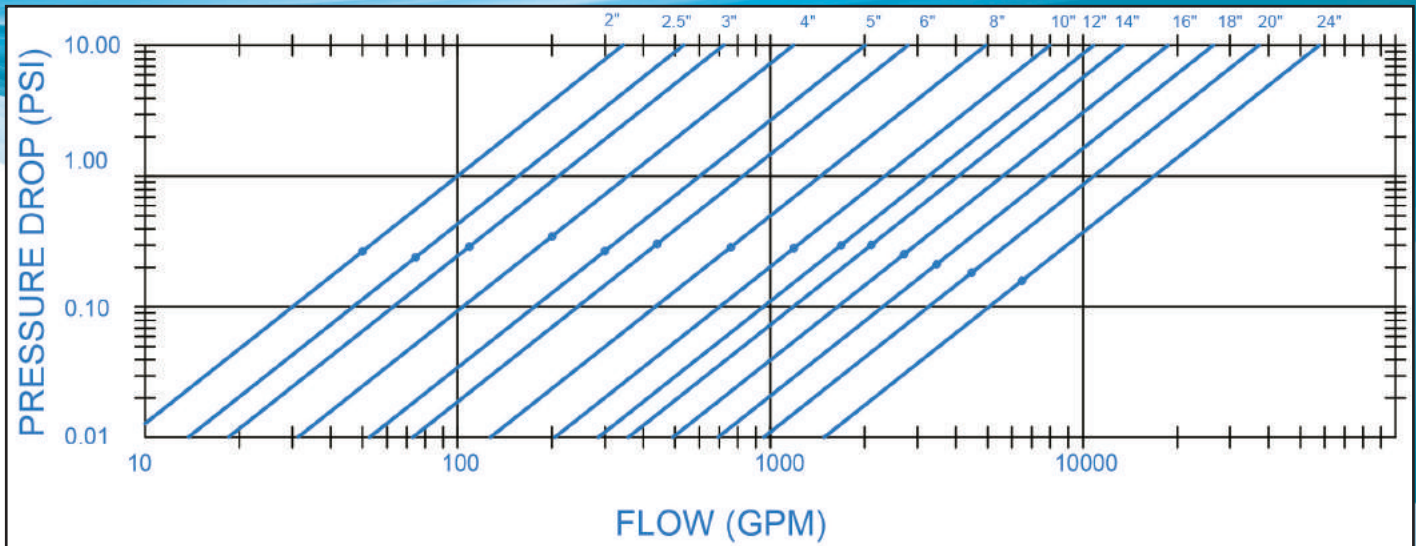


● Performance Curve

ADSF



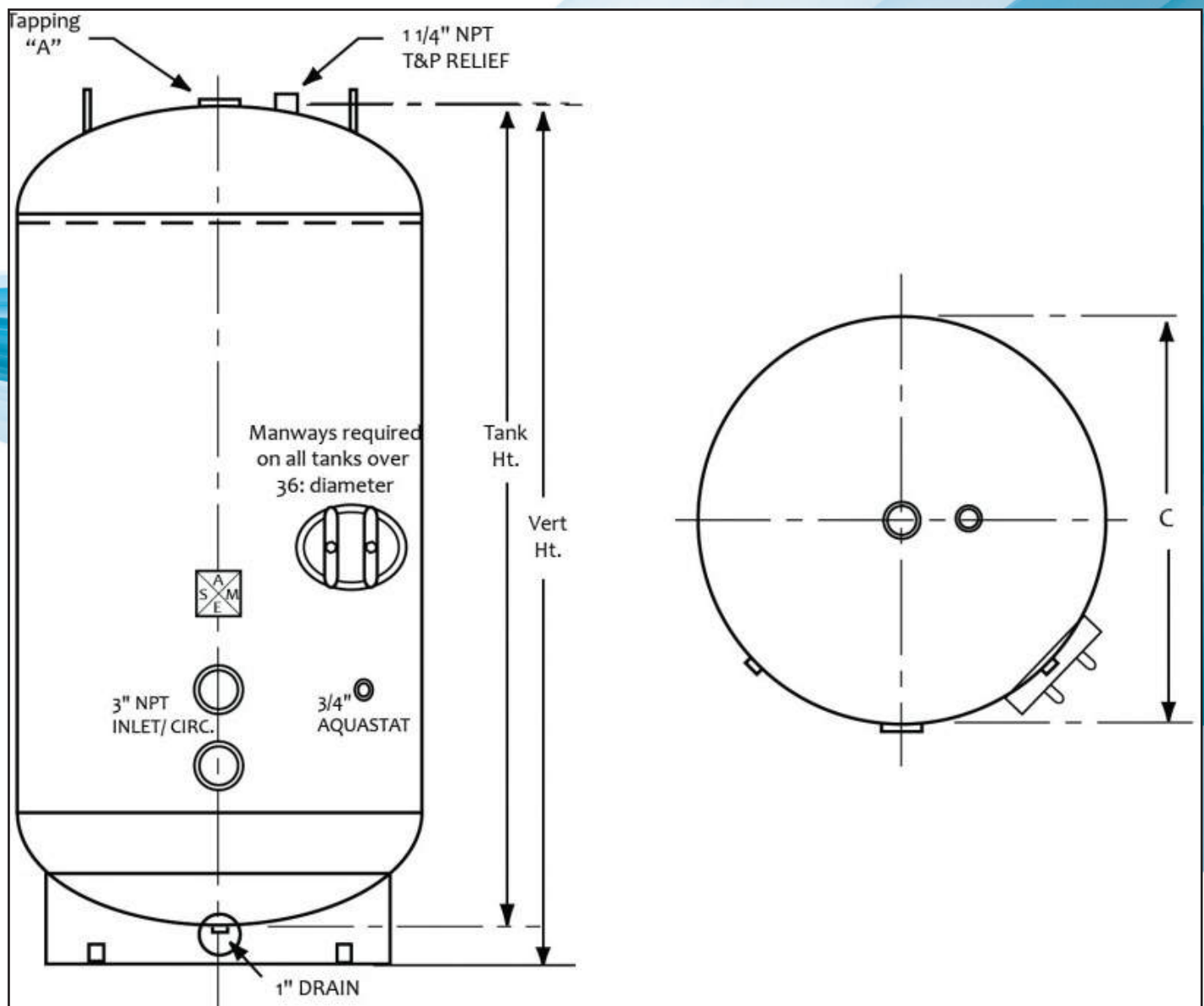
ADSFHV





● Product Specifications RLUV

Flo Fab Tank maintains a large selection of standard Large volume hot water storage tanks in inventory which are available for quick ship. Inventory gallon sizes range from 210 gallon up to 1000 gallons. All tanks are vertical/horizontal, glass lined with oxide primer. Refer to our submittal pages for details on tank fitting configuration. Manways are required on all tanks OVER 36" diameter and our pricing reflects that requirement. Manways are optional on 36" diameter and below. All bare vertical tanks come standard with lifting lugs. Each tank is hydro-tested and independently inspected as ASME regulations require. Need more than what is available in our standard sizes? We can build to your specifications. Fitting changes, flanges, linings and exterior finishes, high pressures are all available but current lead times will apply. Please visit our Get A Quote page and tell us what you're looking for. When ordering or requesting a quotation, please let us know the number of fittings or nozzles, operating pressure and temperature. If needed, legs can be substituted for skirts. Please refer to our options page for information on our Powered Anode system and other items.





RLU HOT WATER STORAGE TANK

Other size available upon request.

Model Number	Actual Gal. Cap.	Nominal Gal.Cap.	Vertical HT.	Tank.HT.	Base Clr.	DIA.	Tapping "A"	Weight @125#
RLUV-30-063	175	193	67"	63"	4"	30"	2.5"	340
RLUV-30-075	210	229	79	75	4	30	2.5	387
RLUV-30-085	240	260	89	85	4	30	2.5	420
RLUV-30-099	280	303	103	99	4	30	2.5	483
RLUV-30-111	320	340	115	111	4	30	2.5	530
RLUV-36-072	285	317	76	72	4	36	2.5	550
RLUV-36-078	310	344	82	78	4	36	2.5	588
RLUV-36-085	340	375	89	85	4	36	2.5	633
RLUV-36-090	360	397	94	90	4	36	2.5	664
RLUV-36-102	415	449	106	102	4	36	2.5	742
RLUV-36-114	465	502	118	114	4	36	2.5	818
RLUV-36-126	515	555	130	126	4	36	2.5	894
RLUV-42-081	435	486	85	81	4	42	3	783
RLUV-42-084	455	504	88	84	4	42	3	805
RLUV-42-093	505	558	97	93	4	42	3	874
RLUV-42-105	575	630	109	105	4	42	3	963
RLUV-42-117	645	702	121	117	4	42	3	1052
RLUV-42-129	720	774	133	129	4	42	3	1140
RLUV-42-139	776	834	143	139	4	42	3	1217
RLUV-48-073	500	572	77	73	4	48	3	1038
RLUV-48-084	580	658	88	84	4	48	3	1161
RLUV-48-096	675	752	100	96	4	48	3	1298
RLUV-48-108	765	846	112	108	4	48	3	1433
RLUV-48-116	836	909	122	116	4	48	3	1522
RLUV-48-120	860	940	124	120	4	48	3	1567
RLUV-48-141	1040	1128	145	141	4	48	3	1805
RLUV-48-168	1225	1306	174	168	4	48	3	2186
RLUV-54-099	875	981	105	99	6	54	3	1596
RLUV-54-113	1000	1119	119	113	6	54	3	1827
RLUV-54-123	1110	1219	129	123	6	54	3	1889
RLUV-54-134	1200	1327	140	134	6	54	3	1969
RLUV-54-147	1340	1457	153	147	6	54	3	2182
RLUV-54-160	1481	1585	166	160	6	54	3	2402
RLUV-54-165	1500	1635	171	165	6	54	3	2484
RLUV-54-183	1690	1814	189	183	6	54	3	2722
RLUV-60-093	1006	1137	102	96	6	60	3	2007
RLUV-60-114	1245	1395	120	114	6	60	3	2376
RLUV-60-138	1530	1689	144	138	6	60	3	2797
RLUV-60-168	1820	1983	174	168	6	60	3	3210
RLUV-60-177	2000	2165	183	177	6	60	3	3481
RLUV-60-186	2105	2276	192	186	6	60	3	3639

See next page for more models.



RLU HOT WATER STORAGE TANK

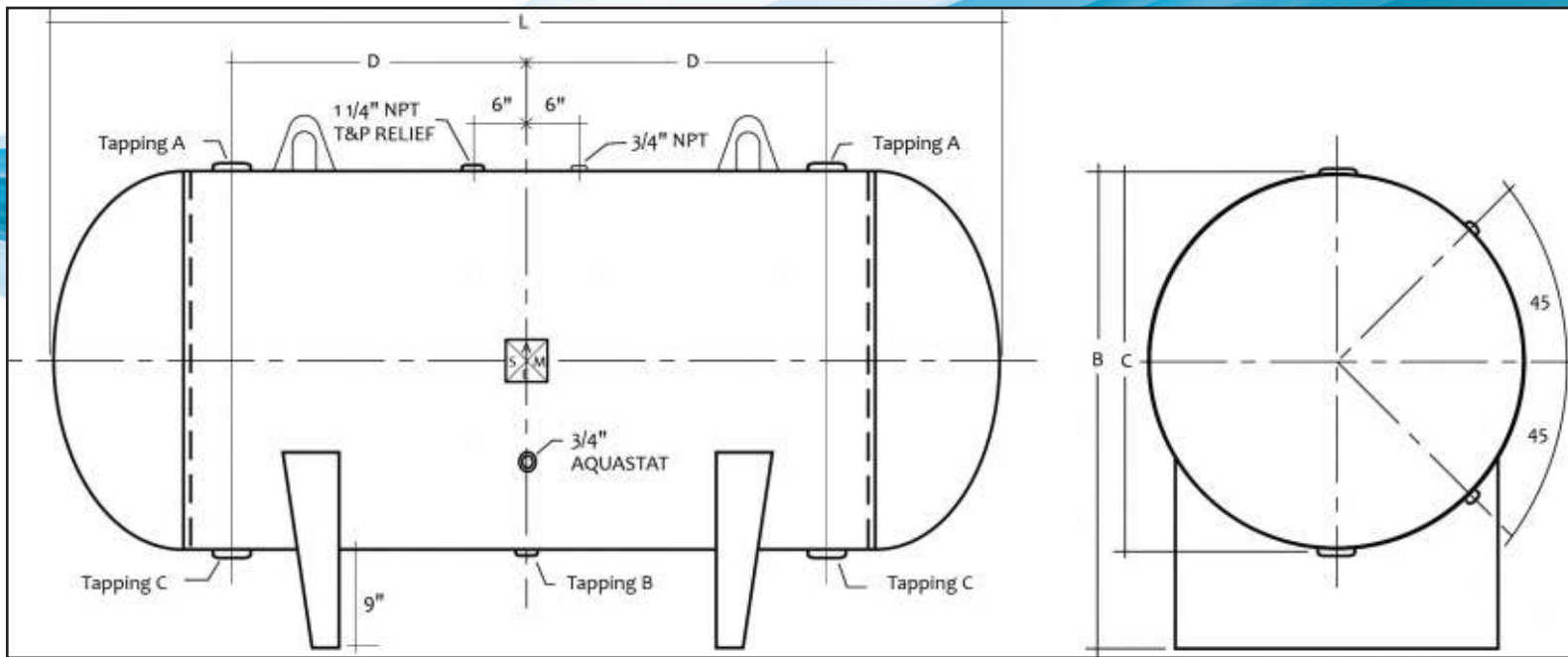
Other size available upon request.

Model Number	Actual Gal. Cap.	Nominal Gal.Cap.	Vertical HT.	Tank.HT.	Base Clr.	DIA.	Tapping "A"	Weight @125#
RLUV-60-210	2395	2570	216	210	6	60	3	3922
RLUV-72-094	1500	1655	100	94	6	72	3	2551
RLUV-72-100	1538	1761	106	100	6	72	3	2677
RLUV-72-117	1835	2061	123	117	6	72	3	3035
RLUV-72-120	1865	2115	126	120	6	72	3	3099
RLUV-72-128	2000	2256	134	128	6	72	3	3267
RLUV-72-144	2285	2538	150	144	6	72	3	3304
RLUV-72-157	2535	2765	163	157	6	72	3	3878
RLUV-72-168	2727	2959	174	168	6	72	3	4110
RLUV-72-192	3147	3382	198	192	6	72	3	4616
RLUV-72-216	3567	3805	222	216	6	72	3	5122
RLUV-72-250	4162	4404	256	250	6	72	3	5616
RLUV-84-121	2500	2901	127	121	6	84	3	4265
RLUV-84-138	2915	3310	144	138	6	84	3	4747
RLUV-84-162	3480	3886	168	162	6	84	3	5428
RLUV-84-186	4045	4462	192	186	6	84	3	6109
RLUV-84-210	4610	5038	216	210	6	84	3	6789
RLUV-84-256	5695	6141	262	256	6	84	3	8094



● Product Specifications RLUH

Flo Fab Tank maintains a large selection of standard Large volume hot water storage tanks in inventory which are available for quick ship. Inventory gallon sizes range from 210 gallon up to 1000 gallons. All tanks are vertical/horizontal, glass lined with oxide primer. Refer to our submittal pages for details on tank fitting configuration. Manways are required on all tanks OVER 36" diameter and our pricing reflects that requirement. Manways are optional on 36" diameter and below. All bare vertical tanks come standard with lifting lugs. Each tank is hydro-tested and independently inspected as ASME regulations require. Need more than what is available in our standard sizes? We can build to your specifications. Fitting changes, flanges, linings and exterior finishes, high pressures are all available but current lead times will apply. Please visit our Get A Quote page and tell us what you're looking for. When ordering or requesting a quotation, please let us know the number of fittings or nozzles, operating pressure and temperature. If needed, legs can be substituted for skirts. Please refer to our options page for information on our Powered Anode system and other items.





RLU HOT WATER STORAGE TANK

Other size available upon request.

Model Number	Nominal Gal.Cap.	Actual Gal. Cap.	HEIGHT "B"	"L"	"D"	SADDLE CLR.	DIA. "C"	Tapping "A"	TAPPING "B"	TAPPING "C"	WEIGHT @125#
RLUH-30-063	193	175	39"	63"	18"	9"	30"	2.5"	1"	3"	365
RLUH-30-075	229	210	39	75	24	9	30	2.5	1	3	412
RLUH-30-085	260	240	39	85	29	9	30	2.5	1	3	545
RLUH-30-099	303	280	39	99	36	9	30	2.5	1	3	508
RLUH-30-111	340	320	39	111	42	9	30	2.5	1	3	555
RLUH-36-072	318	285	45	72	21	9	36	2.5	1	3	576
RLUH-36-078	344	310	45	78	24	9	36	2.5	1	3	614
RLUH-36-085	375	340	45	85	27.5	9	36	2.5	1	3	659
RLUH-36-090	397	360	45	90	30	9	36	2.5	1	3	690
RLUH-36-102	449	415	45	102	36	9	36	2.5	1	3	768
RLUH-36-114	502	465	45	114	42	9	36	2.5	1	3	844
RLUH-36-126	555	515	45	126	48	9	36	2.5	1	3	920
RLUH-42-081	486	435	51	81	24	9	42	3	1	3	810
RLUH-42-084	504	453	51	84	25.5	9	42	3	1	3	832
RLUH-42-093	558	505	51	93	30	9	42	3	1	3	874
RLUH-42-105	630	575	51	105	36	9	42	3	1	3	963
RLUH-42-117	702	645	51	117	42	9	42	3	1	3	900
RLUH-42-129	774	720	51	129	48	9	42	3	1	3	1068
RLUH-42-139	846	790	51	139	53	9	42	3	1	3	1138
RLUH-48-073	572	500	57	73	18.5	9	48	3	1	3	1090
RLUH-48-084	658	580	57	84	24	9	48	3	1	3	1213
RLUH-48-096	752	675	57	96	30	9	48	3	1	3	1350
RLUH-48-108	846	765	57	108	36	9	48	3	1	3	1485
RLUH-48-120	940	840	57	120	42	9	48	3	1	3	1619
RLUH-48-141	1128	1040	57	141	52.5	9	48	3	1	3	1857
RLUH-48-168	1316	1225	57	168	52.5	9	48	3	1	3	2160
RLUH-54-099	981	875	63	99	37.5	9	54	3	1.5	3	1596
RLUH-54-123	1219	1110	63	123	49.5	9	54	3	1.5	3	2124
RLUH-54-134	1327	1217	63	134	61.5	9	54	3	1.5	3	2252
RLUH-54-147	1457	1340	63	147	61.5	9	54	3	1.5	3	2256
RLUH-54-156	1545	1410	63	156	61.5	9	54	3	1.5	3	2364
RLUH-54-165	1635	1500	63	165	61.5	9	54	3	1.5	3	2364
RLUH-54-183	1814	1690	63	183	79.5	9	54	3	1.5	3	2696
RLUH-60-093	1137	1006	69	93	28.5	9	60	3	1.5	3	2548
RLUH-60-114	1395	1245	69	114	24	9	60	3	1.5	3	2648
RLUH-60-138	1689	1530	69	138	48	9	60	3	1.5	3	2829
RLUH-60-168	1983	1820	69	168	60	9	60	3	1.5	3	3560
RLUH-60-177	2165	2000	69	177	67.5	9	60	3	1.5	3	3491
RLUH-60-192	2276	2105	69	192	75	9	60	3	1.5	3	3766
RLUH-60-210	2570	2395	69	210	84	9	60	3	1.5	3	4172
RLUH-72-100	1761	1500	81	100	26	9	72	3	1.5	3	2942

See next page for more models.



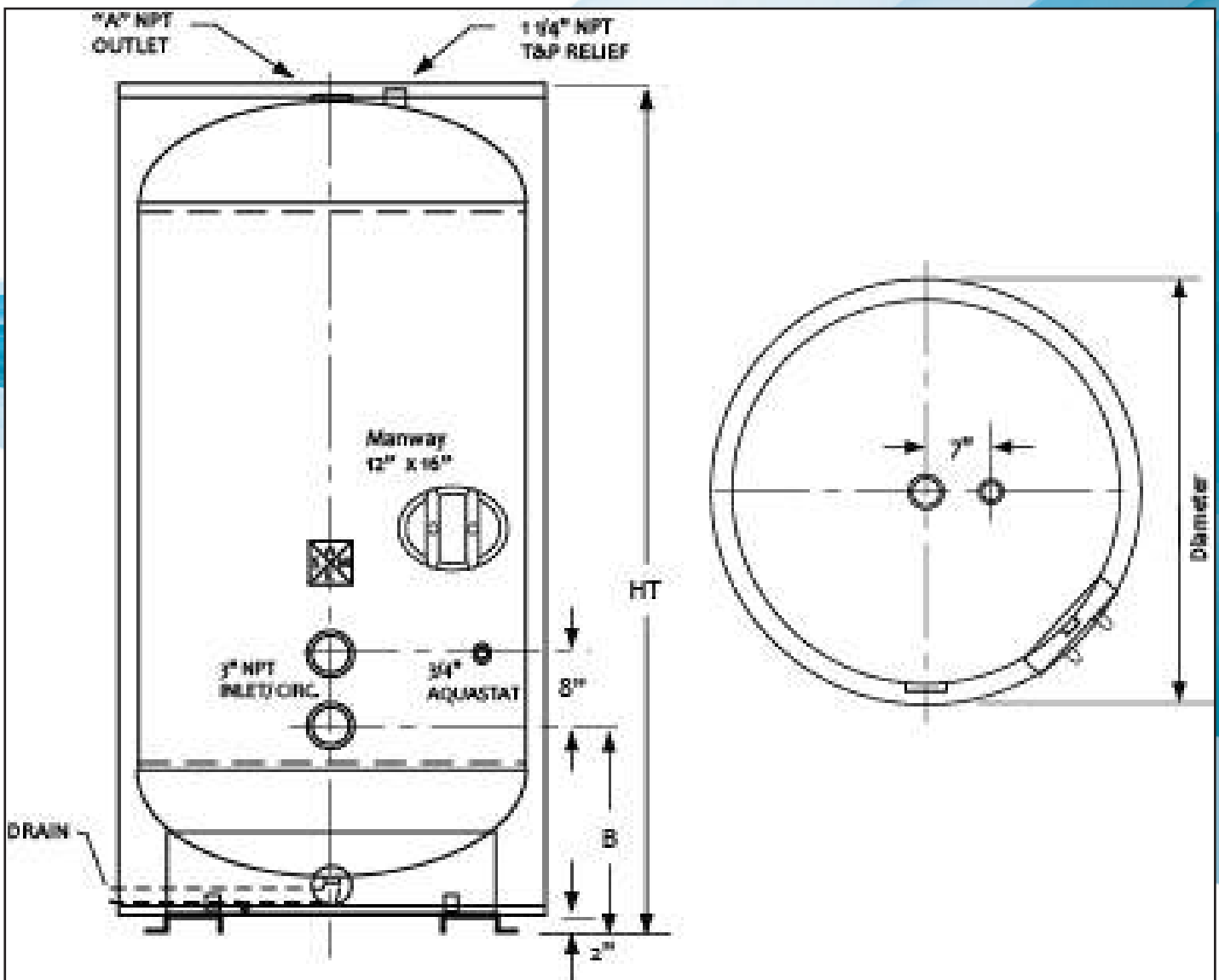
RLU HOT WATER STORAGE TANK

Other size available upon request.

Model Number	Nominal Gal.Cap.	Actual Gal. Cap.	HEIGHT "B"	"L"	"D"	SADDLE CLR.	DIA."C"	Tapping "A"	TAPPING "B"	TAPPING "C"	WEIGHT @125#
RLUH-72-117	2061	1800	81	117		9	72	3	1.5	3	3305
RLUH-72-120	2113	1865	81	120	36	9	72	3	1.5	3	3369
RLUH-72-128	2254	2000	81	128	40	9	72	3	1.5	3	3540
RLUH-72-144	2536	2285	81	144	48	9	72	3	1.5	3	3881
RLUH-72-157	2765	2500	81	157		9	72	3	1.5	3	4105
RLUH-72-168	2959	2700	81	168	60	9	72	3	1.5	3	4394
RLUH-72-192	3382	3115	81	192	72	9	72	3	1.5	3	4852
RLUH-72-216	3805	3530	81	216	84	9	72	3	1.5	3	5418
RLUH-72-250	4404	4120	81	250	101	9	72	3	1.5	3	6144
RLUH-84-121	2901	2500	93	121		9	84	3	1.5	3	4684
RLUH-84-138	3308	2915	93	138	41	9	84	3	1.5	3	5196
RLUH-84-162	3884	3480	93	162	53	9	84	3	1.5	3	5902
RLUH-84-186	4459	4045	93	186	65	9	84	3	1.5	3	6614
RLUH-84-210	5035	4610	93	210	77	9	84	3	1.5	3	7327
RLUH-84-256	6138	5695	93	256	100	9	84	3	1.5	3	8693

● Product Specifications RWUV

Jacketed and insulated tanks are available from our quick ship inventory, however, we need about 3 to 4 days to do the jacketing and insulating. When ordering, please check our current inventory, if the size is available, we'll do our best to get the completed vessel to your door. Alterations of any stock tank is not possible. If you need additional fittings, or changes to our standard fitting design, double glass lining, or other changes or modifications, we would need to build the tank from scratch and standard lead times will apply. - Our jacketed and insulated tanks come standard with 2" of spray foam insulation which meets ASHREA 90.1b (2010 version) requirements. Manways are standard on all tanks over 36" diameter and are optional on 36" diameter and below. Extended lifting lugs can be added to the tank and will protrude out of the top pan and, every tank is mounted on 2" fork-lift rails for easy lifting. All tanks are hydro test and independently inspected prior to jacketing as required by ASME regulations.





RWU HOT WATER STORAGE TANK

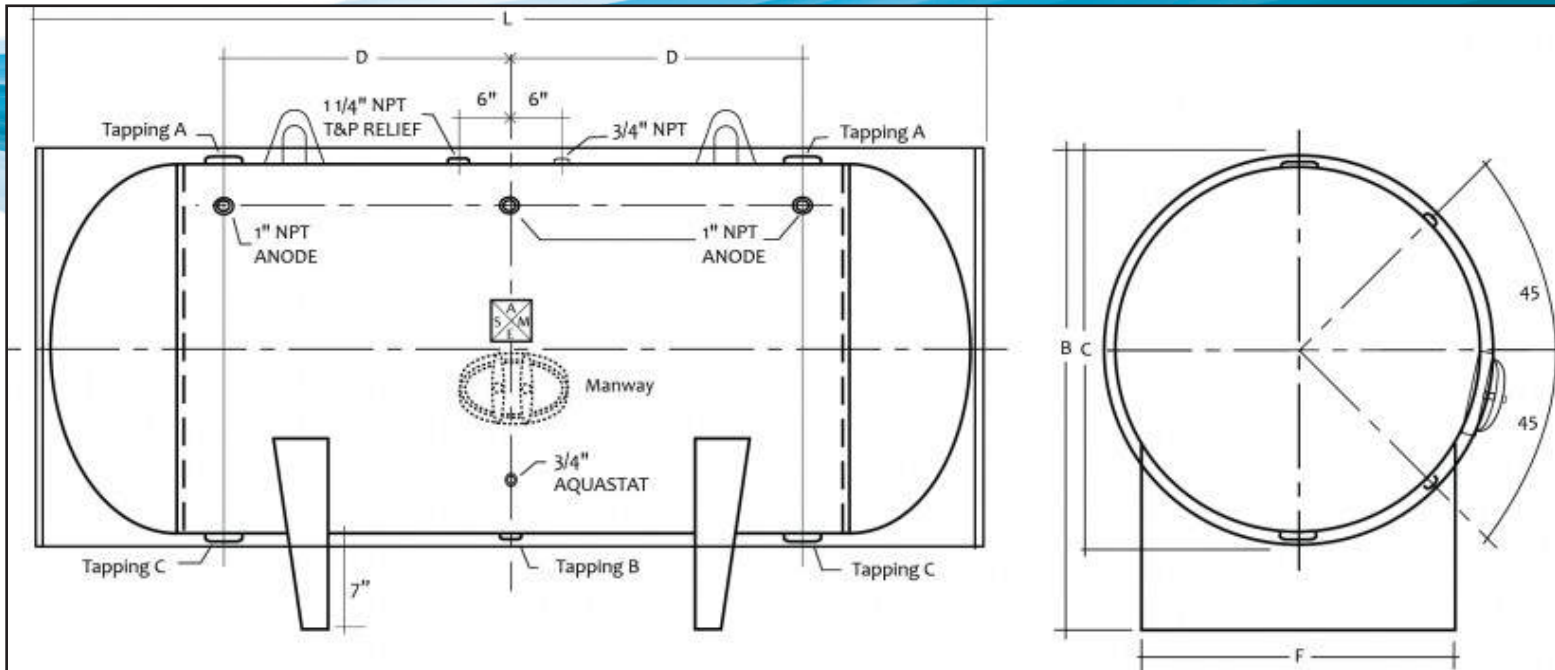
Other size available upon request.

Model Number	Nominal Gal.Cap.	Actual Gal.Cap.	HT	BASE CLEARANCE	"B"	DIAMETER	"A" Hot Out	WEIGHT @125#
RWUV-20-040		40	47"	Sits on base		20"	3/4"	548
RWUV-20-050		50	47	Sits on base		22	3/4	130
RWUV-24-080		80	59	Sits on base	9.25"	24	2	192
RWUV-24-080A		80	59	Sits on base	9.25	24	2	192
RWUV-28-120		120	63	Sits on base	9.25	28	2	225
RWUV-28-120A		120	63	Sits on base	9.25	28	2.5	225
RWUV-32-200		200	78	Sits on base	16.25	32	2.5	541
RWUV-30-063	193	175	71	2"	19.5	34	2.5	548
RWUV-30-075	229	210	83	2	19.5	34	2.5	613
RWUV-30-085	260	240	93	2	19.5	34	2.5	700
RWUV-30-099	303	280	107	2	19.5	34	2.5	673
RWUV-30-111	340	320	119	2	19.5	34	2.5	730
RWUV-36-072	318	285	80	2	21	40	2.5	714
RWUV-36-078	344	310	86	2	21	40	2.5	782
RWUV-36-085	375	340	93	2	21	40	2.5	845
RWUV-36-090	397	360	98	2	21	40	2.5	894
RWUV-36-102	449	415	110	2	21	40	2.5	982
RWUV-36-114	502	465	122	2	21	40	2.5	1106
RWUV-36-126	555	515	134	2	21	40	2.5	1194
RWUV-42-081	486	435	89	2	22.5	46	3	1024
RWUV-42-084	504	453	92	2	22.5	46	3	1074
RWUV-42-093	558	505	101	2	22.5	46	3	1168
RWUV-42-105	630	575	113	2	22.5	46	3	1292
RWUV-42-117	702	645	125	2	22.5	46	3	1392
RWUV-42-129	774	720	137	2	22.5	46	3	1498
RWUV-42-139	846	790	147	2	22.5	46	3	1587
RWUV-48-073	572	500	81	2	24	52	3	1381
RWUV-48-084	658	580	92	2	24	52	3	1539
RWUV-48-096	752	675	104	2	24	52	3	1653
RWUV-48-108	846	765	116	2	24	52	3	1803
RWUV-48-120	940	840	128	2	24	52	3	1947
RWUV-48-141	1128	1040	149	2	24	52	3	2216
RWUV-54-099	981	875	107	2	27.5	58	3	1776
RWUV-54-113	1119	1000	121	2	27.5	58	3	2900
RWUV-60-096	1174	1000	104	2	29	64	3	3325
RWUV-60-114	1395	1245	122	2	29	64	3	3326
RWUV-60-128	1430	1565	136	2	29	64	3	3501
RWUV-60-138	1689	1530	146	2	29	64	3	3541



● Product Specifications RWUH

Jacketed and insulated tanks are available from our quick ship inventory, however, we need about 3 to 4 days to do the jacketing and insulating. When ordering, please check our current inventory, if the size is available, we'll do our best to get the completed vessel to your door. Alterations of any stock tank is not possible. If you need additional fittings, or changes to our standard fitting design, double glass lining, or other changes or modifications, we would need to build the tank from scratch and standard lead times will apply. - Our jacketed and insulated tanks come standard with 2" of spray foam insulation which meets ASHREA 90.1b (2010 version) requirements. Manways are standard on all tanks over 36" diameter and are optional on 36" diameter and below. Extended lifting lugs can be added to the tank and will protrude out of the top pan and, every tank is mounted on 2" fork-lift rails for easy lifting. All tanks are hydro test and independently inspected prior to jacketing as required by ASME regulations. All tanks requiring double glass lined or Flo Fab Defender Epoxy lined are built to order. And, all tank designs are available in 316L or 2205 duplex stainless steel (not available in 40, 50, 80, 80A, 120, 120A or 200 gallon)





RWU HOT WATER STORAGE TANK

Other size available upon request.

Model Number	Nominal Gal.Cap.	Actual Gal. Cap.	HEIGHT "B"	"L"	"D"	SADDLE CLR.	DIAMETER "C"	TAPPING "A"	TAPPING "B"	TAPPING "C"	WEIGHT @125#
RWUH-30-063	193	175	41"	67"	18"	7"	34"	2.5"	1"	3"	548
RWUH-30-075	229	210	41	79	24	7	34	2.5	1	3	613
RWUH-30-085	260	240	41	89	29	7	34	2.5	1	3	700
RWUH-30-099	303	280	41	103	36	7	34	2.5	1	3	673
RWUH-30-111	340	320	41	115	42	7	34	2.5	1	3	730
RWUH-36-072	318	285	47	76"	21	7	40	2.5"	1	3	714
RWUH-36-078	344	310	47	82	24	7	40	2.5	1	3	782
RWUH-36-085	375	340	47	89	27.5	7	40	2.5	1	3	845
RWUH-36-090	397	360	47	94	30	7	40	2.5	1	3	894
RWUH-36-102	449	415	47	106	36	7	40	2.5	1	3	982
RWUH-36-114	502	465	47	118	42	7	40	2.5	1	3	1106
RWUH-36-126	555	515	47	130	48	7	40	2.5	1	3	1194
RWUH-42-081	486	435	53	85	24	7	46	3	1	3	1024
RWUH-42-084	504	453	53	88	25.5	7	46	3	1	3	1074
RWUH-42-093	558	505	53	97	30	7	46	3	1	3	1168
RWUH-42-105	630	575	53	109	36	7	46	3	1	3	1292
RWUH-42-117	702	645	53	121	42	7	46	3	1	3	1392
RWUH-42-129	774	720	53	133	48	7	46	3	1	3	1498
RWUH-42-139	846	790	53	143	53	7	46	3	1	3	1587
RWUH-48-073	572	500	59	77	18.5	7	52	3	1	3	1381
RWUH-48-084	658	580	59	88	24	7	52	3	1	3	1539
RWUH-48-096	752	675	59	100	30	7	52	3	1	3	1653
RWUH-48-108	846	765	59	112	36	7	52	3	1	3	1803
RWUH-48-120	940	840	59	124	42	7	52	3	1	3	1947
RWUH-48-141	1128	1040	59	145	52.5	7	52	3	1	3	2216



● Product Specifications

Flo Fab's Buffer Tanks are designed for use with Commercial chiller water systems and hydro-
nic heating systems which may have insufficient water volume to maintain optimum operating
temperature control. Niles offers gallon capacities in 130 gal, 210 gal, 300 gal, 400 gal, 528
gal, and 1040 gal. Additional sizes are also available. Buffer tanks are constructed under the
A.S.M.E., Section VIII., Division I code as such are not required to be equipped with a manway.
Vertical tank designs are available with a center baffle plate with inlet and outlet on upper shell.
The top of the tank has an FNPT port for the air vent; the bottom of the tank has an FNPT drain
port. Closed loop systems do not require a manway, but they are available as an option, if
desired. Standard product design offering as well as custom configurations with alternate sys-
tem connections are available. Available connections are Female National Pipe Threads, ANSI
Flanges, and Grooved Pipe End connections. R-16 closed cell spray foam insulation is also avail-
able. Linings include, Ultonium or Flo Fab Defender Epoxy, if needed. Ultonium lined tanks do
not have internal baffles.

Furnish and install as shown on plan, a Flo Fab Steel Tank A.S.M.E. Buffer tank of _____gallons,
_____ diameter with an overall height of _____. The tank must be designed, constructed and
stamped 125 psi @ -20F to 450F in accordance with section VIII, Division I of the A.S.M.E. Boi-
ler and Pressure Vessel code and registered with the National Board of boiler and pressure ves-
sel inspections. The buffer tank shall be painted with 1) coat of red oxide shop primer paint. A
manufacturers data report for pressure vessels, Form U-1A as required by the provisions of the
A.S.M.E. Boiler and Pressure Vessel code shall be furnished for each buffer tank upon request.
To properly size the buffer tank, calculate the systems total capacity including all piping and ter-
minal equipment. Subtract that number from the chiller manufacturers recommended system
capacity. If a 100 ton chiller requires 1000 gallons of system capacity for high accuracy control
and the total piping system totals only 600 gallons, a 400 gallon buffer tank would be required.
(As an example) R-16 closed cell spray foam insulation is also available. Linings include, Ulto-
nium or Flo Fab Defender Epoxy, if needed. Ultonium lined tanks do not have internal baffles.

SIZING & SELECTION FOR FLO FAB STEEL TANK CBT BUFFER TANKS:

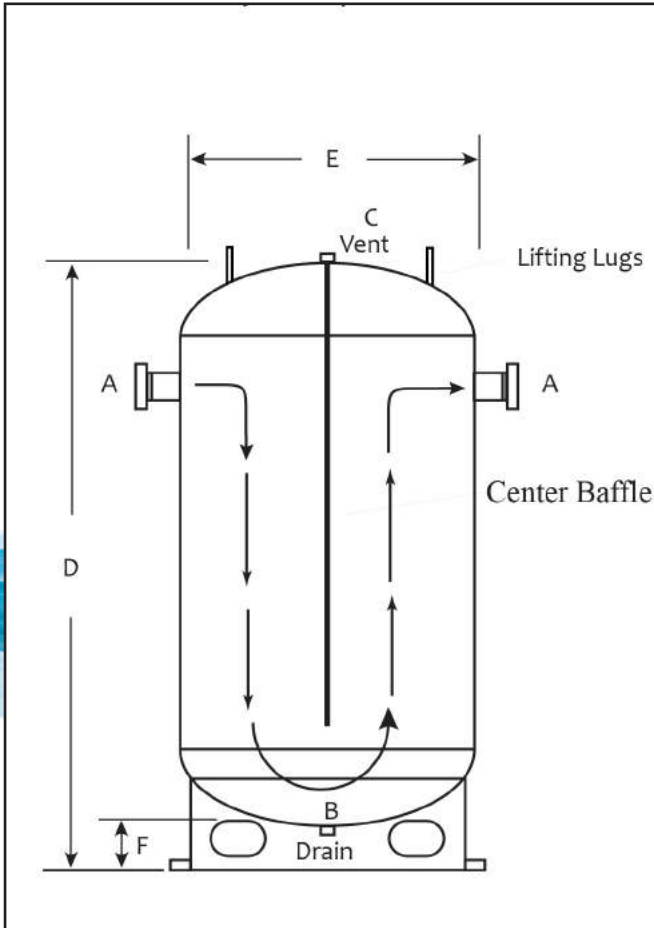
1. Required Chiller Volume: _____ Gallons
Manufacturer of chiller unit's recommended 'gallons per ton' of cooling. Typical 3 - 6
gallons per ton. Critical accuracy: 6 - 10 gallons per ton.
 2. Actual Gallon Volume in the entire chiller system: _____ Gallons (including piping)
- (1) Chiller requirements gallons: _____ (-) minus (2) Actual gallons in
system = _____ gallon size of buffer tank.

Flo Fab Steel Tank manufactures a standard line of vertical and horizontal buffer tanks. Vertical
tanks are equipped with an internal baffle and standard flanged connections on 210 gallon and
above. Horizontal tanks typically do not have internal baffles, but can be added. Since Niles
Steel Tank is a custom tank fabricator, we would be happy to add or change our current design
to suit your specific requirements. Grooved pipe end fitting are available in place of flanged
connections. Our 2-part, closed cell foam spray on insulation can be added to any size tank and
is durable enough for outdoor applications.



Product Specifications

Buffer tanks are essential components in modern day chiller and heating systems. NST buffer tanks are designed to increase the systems capacity so water temperatures stabilize within the manufacturers recommendations. When the cooling system piping capacity is under sized, compressors will short cycle and temperature control is harder to maintain within the building. Chiller manufacturers recommend between 3 and 10 gallons per ton of nominal cooling capacity in the piping system, Depending on the level of accuracy of temperature control, higher volumes may be required.



Manways are optional on all closed loop systems

Inlets and outlets can be re-positioned in the shell of the tank if required

All tanks are constructed and certified in accordance with the ASME section VIII, Div. I code

Topcoat Spray foam insulation is available, R-16 value

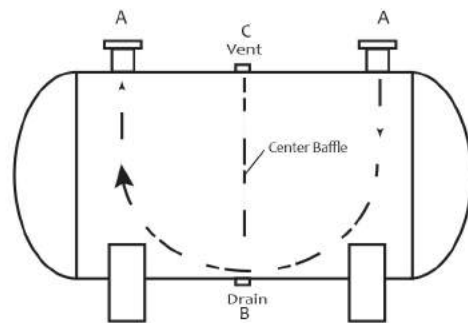
Red Oxide shop primer on bare tanks

Custom sizes are available

Grooved, Flanged and NPT connections available

Interior linings are available

304 and 316L Stainless Steel is available



Model	Gal.	A	B	C	D	E	F	Weight
CBT-24-072	130	2" NPT	1"	1"	76"	24"	4"	375
CBT-30-075	210	3" Flg	1"	1"	79"	30"	4"	425
CBT-36-072	300	4" Flg	1"	1"	76"	36"	4"	633
CBT-36-094	400	4" Flg	1"	1"	98"	36"	4"	715
CBT-42-084	460	4" Flg	1"	1"	88"	42"	4"	1250
CBT-48-077	528	6" Flg	1"	1"	81"	48"	4"	1150
CBT-48-090	600	6" Flg	1"	1"	94"	48"	4"	1765
CBT-48-099	700	6" Flg	1"	1"	103"	48"	4"	1885
CBT-48-141	1000	6" Flg	1"	1"	145"	48"	4"	1957
CBT-54-096	850	6" Flg	1"	1"	102"	54"	6"	1630
CBT-60-096	1040	8" Flg	1"	1"	102"	60"	6"	2280

Horizontal buffer tanks are built to order. Consult factory for sizes, dimensions and specifications.

We are proud supplier for the following completed and on going projects :



444 10th Avenue North
NEW YORK, NY 10001.



Edgemere
1502 LAKESHORE ROAD
E., OAKVILLE, ONTARIO,
CANADA



Bacaro Pizzeria
4259 Sainte-Catherine O.
Westmount, Quebec
H3Z 1P7



TRICENTRIS, Lachute
chemin Félix-Touchette,
Lachute, Quebec, Canada

Sales and Service:

Quebec, Canada
Tel. : (450) 621-2995
Fax : (450) 621-4995

Lake Worth
Florida, USA
33467-5749

Toronto, Canada
Tel. : +1 (647) 544-2995

www.flofab.com

SERVICE 24/7 : parts@flofab.com



<http://www.arcomnet.com/masterspec/>