



SERVICE

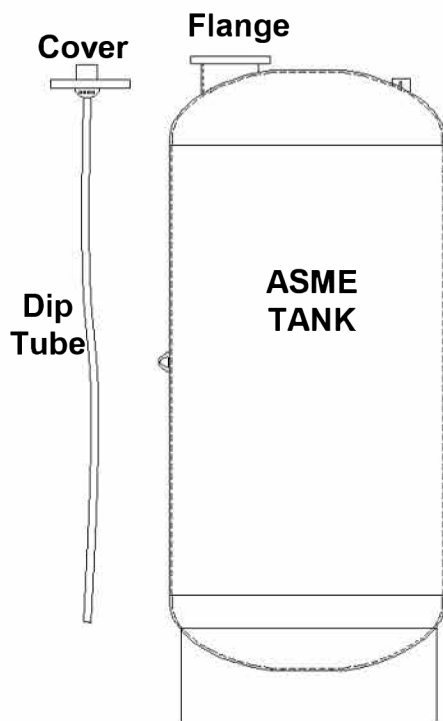
TYPE: INSTRUCTIONS FOR REPLACING
EXPANSION TANK BLADDER

MODELS: RDT 1000 TO RDT 15000

Submittal Sheet No. N-7421

Date: 4-04

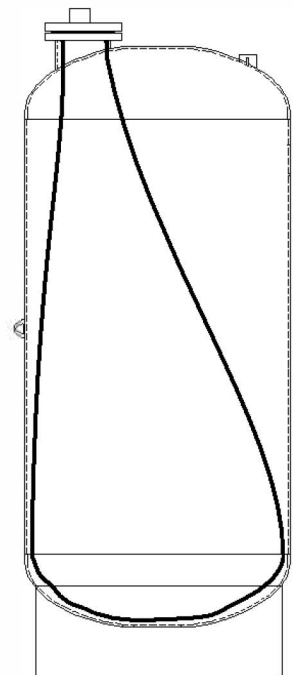
1. Tank must be drained and all pressure released.
2. Bladder is attached to top of tank.
3. Remove cover plate from the system connection at the top of the tank, this will expose the collar portion of the bladder. Remove any residual water from inside the bladder.
4. Remove the old bladder.
5. Take the new bladder and roll it lengthwise in a tube shape. Tape can be used to keep the bladder in this tube shape.
6. Insert the new bladder into the flange on the top of the tank. If tape was used on the bladder, remove it as the bladder is being inserted.
7. From the top, make sure the bladder is not twisted inside the tank. Re-attach cover plate on to the tank to make an airtight seal.
8. Re-charge the tank to the required pre-charge pressure.



Tank and Components



Bladder – shown rolled
and taped



Bladder Installed