



Hydraulic Separators

PSA Series



www.flofab.com

001-cat-2016-hs

Go to www.flofab.com in Our Products Section to see the Master Spec - <http://www.arcomnet.com/masterspec/>

TABLE OF CONTENTS

GENERAL DATA

PRODUCT INFORMATIONS.....	2
---------------------------	---

TECHNICAL DATA

PRODUCT SIZE AND DIMENSIONS.....	3
----------------------------------	---

HISTORY

Flo Fab was established in 1981 by Denis Gauvreau who created and developed the products line and constantly being perfected by Marc Gauvreau, as well as by a team of professional engineers and designers. It's a combination of existing designs from several renowned products and the innovative ideas of a new generation professionals.

Through the years, Flo Fab has acquired several companies and service entities including : AQUA-PROFAB (ASME Tanks manufacturer), MÉNARD, LÉONARD ÉLECTRIQUE, PMA. , Furthermore Flo Fab purchased equipment, fabrication designs and patterns from IDEALCO, a manufacturer of shell and tube type heat exchangers.

The after sales services, sales, engineering, R&D, production, quality control, accounting and administration departments of all the above companies share the same location.

In December 2014, Marc Gauvreau, son of the founder, acquired all shares of The company. Flo Fab and is constantly investing in new state of the art innovations new product like the XRI series and Prefab Skid for Hydronic Heating & cooling system, pumping systems. This has allowed Flo Fab to retain competent and experienced staff of professionals with varied and specialized abilities that constantly work on improving our existing products and add new engineered solutions that exceeding customer's expectations .

Flo Fab has grown quite rapidly and now proudly offers of a wide range of products available directly from one manufacturer. This includes pumps & pump packages, tanks, heat exchangers & hydronic accessories. This allows each project stakeholders to enjoy economical savings, peace of mind, best value for their investment and optimized total cost of ownership.



● Product Informations

Primary/Secondary Header

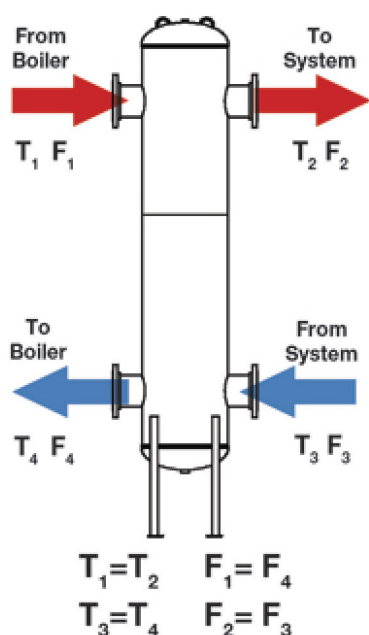
Flo Fab's Primary / Secondary Headers are used in heating and cooling systems that require the primary and secondary loop of their system to be interlocked.

The PSA is designed to keep both connected hydraulic circuits completely independent from one another and to provide a means for system air elimination.

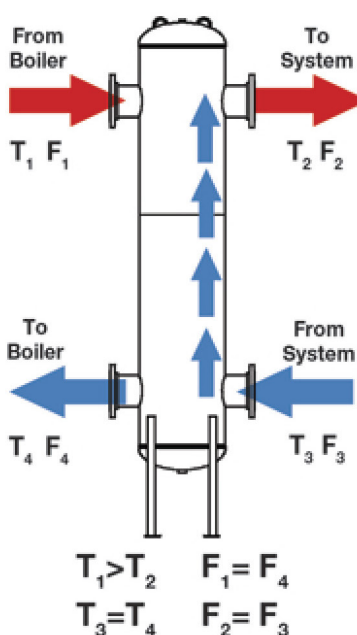
The PSAV builds on that functionality with the inclusion of Internal coalescence coils in the tank that eliminate entrained air and separate debris associated with start-up and maintenance of the system. As a result, the PSAV replaces the need for an air/dirt separator.

- Separates Primary and Secondary loop hydraulically
- Removes air from system
- Separates and collects sediments
- Easy installation

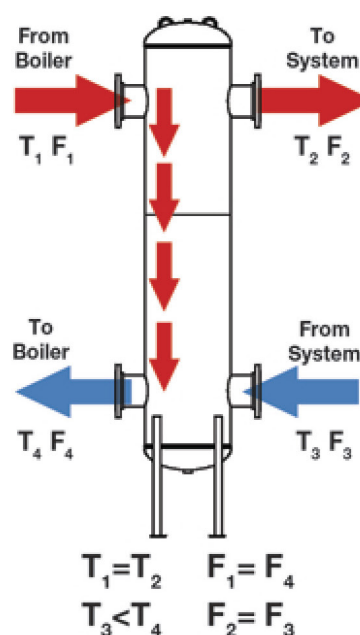
How it Works • 3 Possible Flow Paths



Equal Flow: Temperature (T) from boiler and distribution system is equal and flow (F) is balanced with minimal mixing in the center PSA body.



Greater Secondary Flow: System demand is greater than boiler output, which results in mixing in the center PSA body and decreased temperature of water delivered to system (T₂).



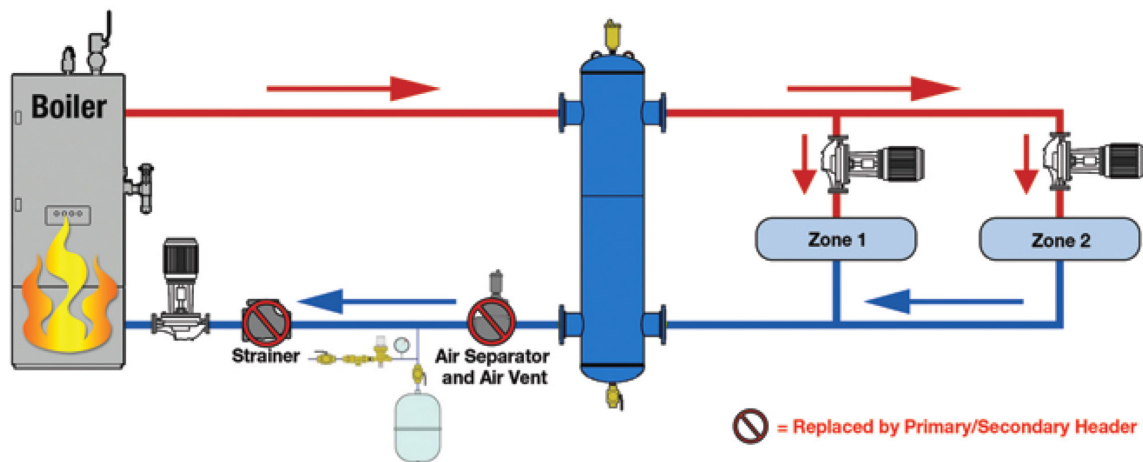
Greater Primary Flow: System demand is less than boiler output, which results in mixing in the center PSA body and increased temperature of water returned to boiler (T₄).

FORMULAS TO DETERMINE TEMPERATURE

$$T_2 = \left(\frac{(F_3 - F_1)T_3 + (F_1)T_1}{F_3} \right)$$

$$T_4 = \left(\frac{(F_1 - F_2)T_1 + (F_3)T_3}{F_1} \right)$$

Flo Fab Model PSA Hydraulic Separation Solution Replaces Traditional Components



PSA PRIMARY/SECONDARY HEADER WITH INTERNAL BAFFLE - 150 PSI

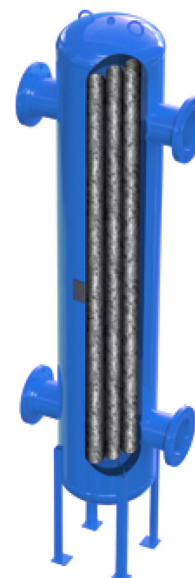
Model	Part No.	Conn.	Dia.	Height	Width	Flow (GPM)	Wt. (Lbs.)
PSA-2	71002020	2	6 5/8	34 1/4	14 3/4	65	90
PSA-2.5	71002025	2.5	6 5/8	39 1/4	14 3/4	68	115
PSA-3	71002030	3	10 3/4	49 1/2	18 3/4	175	225
PSA-4	71002040	4	10 3/4	70 1/4	22 3/4	180	330
PSA-5	71002050	5	14	80 1/2	26	300	215
PSA-6	71002060	6	18	93 3/4	30	500	320
PSA-8	71002080	8	24	122 3/4	36	900	575
PSA-10	71002100	10	30	149 1/4	42	1420	935
PSA-12	71002120	12	30	179 1/2	42	1425	1165
PSA-14	71002140	14	42	199.25	54	1650	2430
PSA-16	71002160	16	48	224.25	60	2200	3260

Materials = Steel Shell; Coalescing Medium = Stainless Steel; Maximum Pressure = 150 psig; Maximum Temperature = 450°F; Finish = Primer Painted Exterior
Legs come standard with 6" connection models and above.

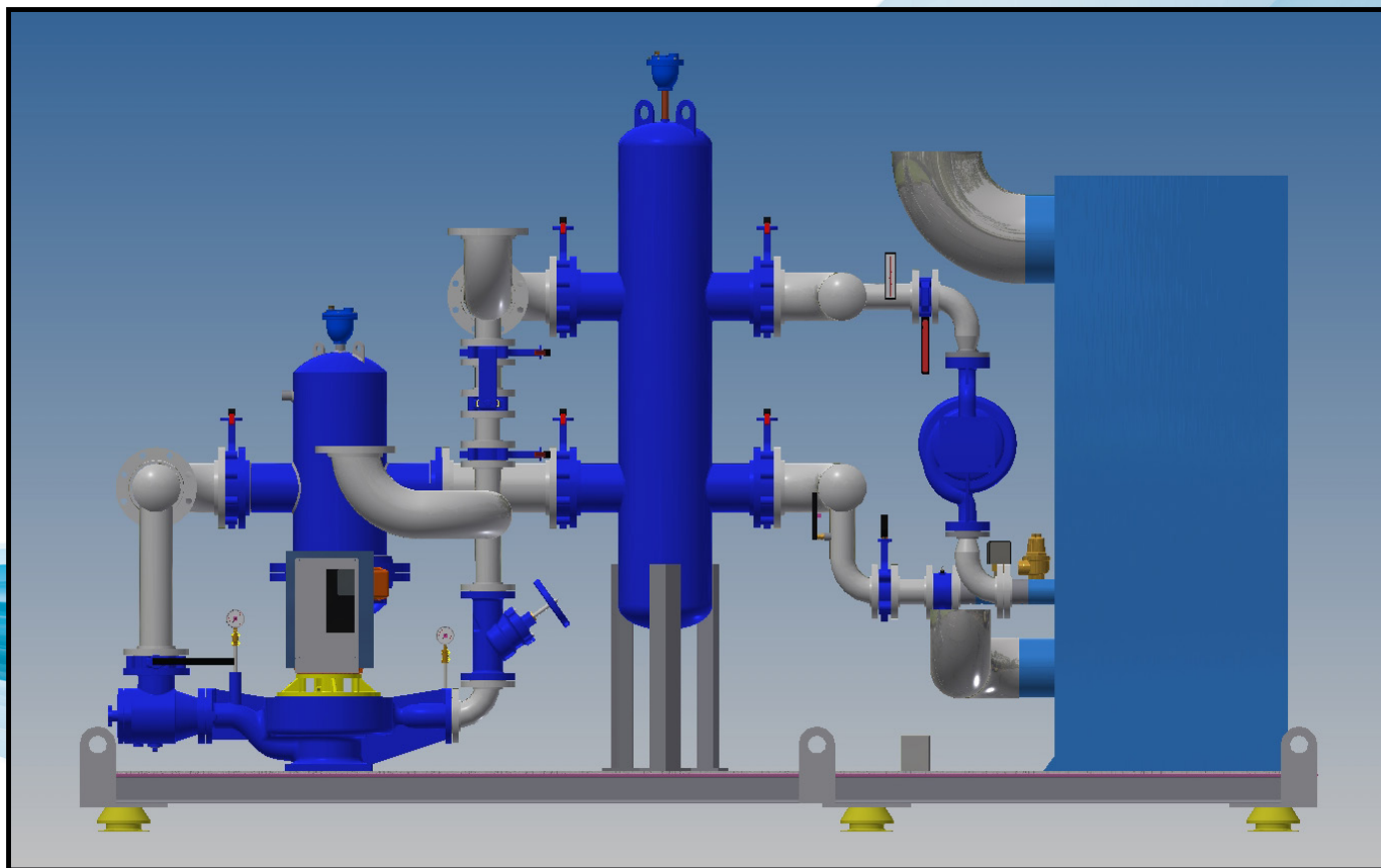
PSAV PRIMARY/SECONDARY HEADER WITH AIR/DIRT SEPARATION - 150 PSI

Model	Part No.	Conn.	Dia.	Height	Width	Flow (GPM)	Wt. (Lbs.)
PSAV-2	71102020	2	6 5/8	34 1/4	14 3/4	65	120
PSAV-2.5	71102025	2.5	6 5/8	39 1/4	14 3/4	68	145
PSAV-3	71102030	3	10 3/4	49 1/2	18 3/4	175	270
PSAV-4	71102040	4	10 3/4	70 1/4	22 3/4	180	380
PSAV-5	71102050	5	14	80 1/2	26	300	280
PSAV-6	71102060	6	18	93 3/4	30	500	375
PSAV-8	71102080	8	24	122 3/4	36	900	635
PSAV-10	71102100	10	30	149 1/4	42	1420	995
PSAV-12	71102120	12	30	179 1/2	42	1425	1250
PSAV-14	71102140	14	42	199.25	54	1650	2480
PSAV-16	71102160	16	48	224.25	60	2200	3310

Materials = Steel Shell; Coalescing Medium = Stainless Steel; Maximum Pressure = 150 psig; Maximum Temperature = 450°F; Finish = Primer Painted Exterior
Legs come standard with 6" connection models and above.



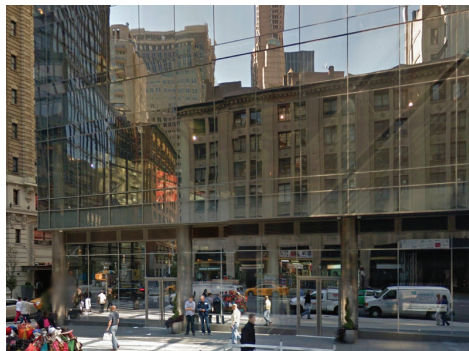
- **Package It**



We are proud supplier for the following
completed and on going projects :



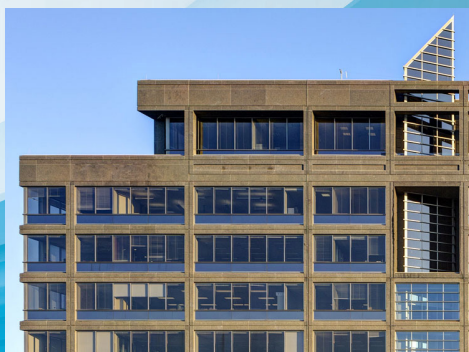
Western Power Sports
601 E Gowen Rd,
Boise, ID, USA



Granite Broadway
1717 Broadway, New York,
New York, USA



Yale University
New Haven,
Connecticut, USA



SSQ Building
2525 Laurier boulevard
Quebec City, QC, Canada

Sales and Service:

Quebec, Canada
Tel. : (450) 621-2995
Fax : (450) 621-4995

Toronto, Canada
Tel. : +1 (647) 544-2995

Lake Worth
Florida, USA
33467-5749

www.flofab.com

SERVICE 24/7 : parts@flofab.com

