



SUBMITTAL

TYPE:

**PSA - Pressure Drop**  
**ASME PRIMARY / SECONDARY HEADER**

**MODELS: PSA-2 TO PSA-12**

Submittal Sheet No. P-3504

Date: 4-09

JOB

Representative \_\_\_\_\_

Unit Tag No. \_\_\_\_\_

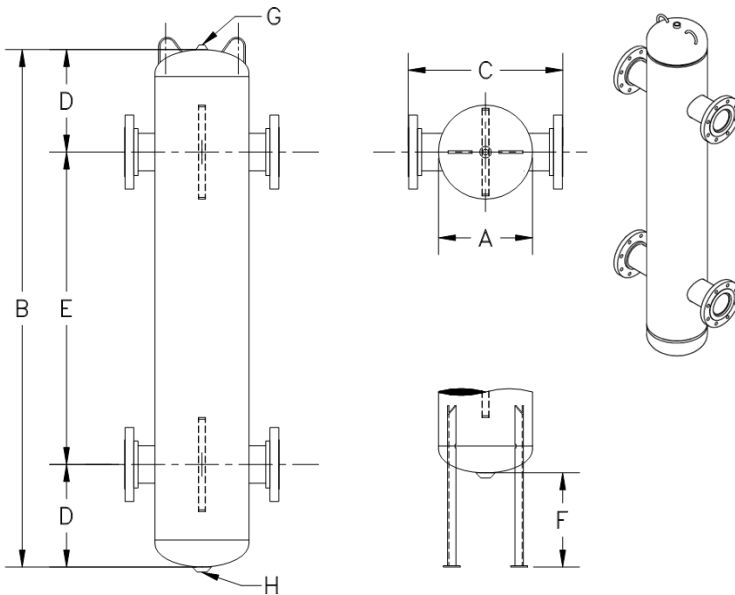
Order No. \_\_\_\_\_ Date \_\_\_\_\_

Engineer \_\_\_\_\_

Submitted By \_\_\_\_\_ Date \_\_\_\_\_

Contractor \_\_\_\_\_

Approved By \_\_\_\_\_ Date \_\_\_\_\_



**Description**

FloFab Primary / Secondary ASME Headers are used in heating and cooling systems that require the primary and secondary loop of their system to be interlocked. The PSA is designed to keep both connected hydraulic circuits completely independent from one another. All Primary/Secondary headers are built in accordance with ASME Section VIII, Div 1.

**PRESSURE DROP CURVES**

